



**2011
Circle-Track
& Performance
Edition
Volume 1**

**CHECK OUT MORE SPECIALS
ONLINE AT WWW.KMJENT.COM**



EXTREME PERFORMANCE SAVINGS! CURRENT HOT SPECIALS

SBC/BBC HEI DISTRIBUTOR



PCE PC6001D, 50KV HEI STOCK APPEARING.....\$49.99
PCE PC6001A, 65KV HEI ACCEL-TYPE SUPER COIL...\$49.99
See page 15 for more ignition

ELECTRIC COOLING FANS



PCE PC2051S, 10" CURVED BLADE REVERSIBLE.....\$19.99
PCE PC2052S, 12" CURVED BLADE REVERSIBLE.....\$22.99
PCE PC2053S, 14" CURVED BLADE REVERSIBLE.....\$29.99
PCE PC2054S, 16" CURVED BLADE REVERSIBLE.....\$34.99
See page 16 for more cooling products

SBC/BBC MINI-STARTER



153/168 TOOTH STRAIGHT BOLT PATTERN GEAR-REDUCTION MINI-STARTER
KMJ JM7001R, RED.....\$79.99
KMJ JM7001BK, BLACK.....\$79.99
KMJ JM7001C, CHROME.....\$89.99
See page 15 for more starters

**ASSAULT RACING
FABRICATED VALVE COVERS**



SBC POLISHED ALUMINUM WITH BOLTS
ARC V4001.....\$69.99
See page 7 for more valve covers and gaskets

**KMJ MAXIMUM RACE SERIES
FULL ROLLER ROCKERS**



KMJ ARA3501538, SBC 1.53/8.....\$159.99
KMJ ARA45417716, BBC 1.7 7/16.....\$169.99
KMJ ARA3021638, SBF 1.6 3/8.....\$159.99
See page 8 for more rocker arms and valve train

**HURRICANE SERIES
INTAKE MANIFOLDS**



PCE PC2031N, SBC SATIN FINISH.....\$119.99
PCE PC2030, SBC POLISHED FINISH.....\$169.99
PCE PC3030, BBC POLISHED FINISH.....\$169.99
See page 12 for more intake manifolds

**Your source for Chevy, Ford, Mopar, Buick, Oldsmobile,
Pontiac, Lincoln, Mercury, Chrysler, Dodge and more!**

Order online at:

WWW.KMJENT.COM

Or call:

515-733-2890



ROTATING ASSEMBLY PARTS



SCAT 9000 SERIES CAST CRANKSHAFTS

SCA 9-10442, SCAT SBC 350 CAST CRANKSHAFT.....	\$172.58
SCA 9-10526, SBC 350 1-PC REAR MAIN 1986+.....	\$172.58
SCA 9-350-3480-5700, SBC 350/305.....	\$223.07
SCA 9-350-3750-5700, SCAT SBC 383 STROKER CRANKSHAFT.....	\$223.07
SCA 9-400-3500-6000, SBC 377 400 MAINS 3.50 STROKE.....	\$223.07
SCA 9-400-3750-6000, SBC 400 3.75 STROKE.....	\$223.07

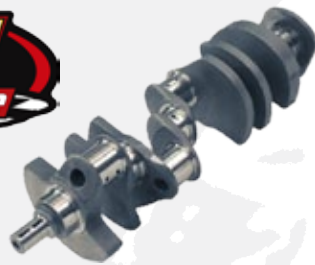
SCAT STD WEIGHT 50-55LBS 4340 CRANKSHAFTS

SCA 4-350-3480-5700, SBC 350/305 FORGED 4340.....	\$577.42
SCA 4-350-3750-5700, SCAT SBC 383 STROKER CRANKSHAFT.....	\$577.42
SCA 4-400-3500-6000, SBC 377 400 MAINS 3.50 STROKE.....	\$577.42
SCA 4-400-3750-5700, SBC 400 3.75 STROKE.....	\$577.42

SCAT PRO COMP LIGHTWEIGHT 4340 CRANKSHAFTS

Perfect for engines wanting quicker RPMs, SCAT's Pro Comp cranks use a computer generated symmetrical counterweight system to reduce rotating mass. This reduces stress on the block, crank flex, and overall weight while increasing horsepower and acceleration. Scat's aero wing counterweight edge design reduces horsepower-robbing windage and oil turbulence in the crankcase. Ideal for competition engines using medium-weight components while demanding maximum performance.

SCA 4-350-3480-5700-2, SBC 350 FORGED 4340 3.48 STROKE ~44LBS.....	\$999.99
SCA 4-350-3750-5700-2, SBC 383 FORGED 4340 3.75 STROKER ~49LBS.....	\$999.99
SCA 4-400-3750-5700-2, SBC 400 FORGED 4340 3.75 STROKE ~50LBS.....	\$999.99



CAST CRANKSHAFTS

KMJ QT442, SBC 350/305 CAST.....	\$189.00
KMJ QT383, SBC 383 STROKER CAST.....	\$189.00
KMJ QT529, SBC 400 CAST.....	\$189.00

4340 FORGED CRANKSHAFTS

KMJ DG3-182D, SBC 350/305 FORGED 4340.....	\$499.00
KMJ DG3-185D, SBC 383 STROKER FORGED 4340.....	\$499.00
KMJ DG3-186, SBC 350 MAINS 3.875 STROKE FORGED 4340.....	\$499.00
KMJ DG3-115D, SBC 400 MAINS 3.75 STROKE FORGED 4340.....	\$499.00
HOW 353557TS2, SBC HOWARDS 350 FORGED 4340 USA.....	\$549.99*
HOW 353757TS2, SBC HOWARDS 383 STROKER FORGED 4340 USA.....	\$549.99*
HOW 403757TS2, SBC HOWARDS 400 3.75 STROKE FORGED 4340 USA.....	\$549.99*

*While Supplies Last

SCAT I-BEAM CONNECTING RODS

SCA 31CR5700, SBC BUSHED 4340 FORGED 3/8 BOLTS 5.7.....	\$219.00
SCA 31CR5700P, SBC PRESS-FIT 4340 FORGED 3/8 BOLTS 5.7.....	\$199.99
SCA 31CR6000, SBC BUSHED 4340 FORGED 3/8 BOLTS 6.0.....	\$219.99
SCA 31CR6000P, SBC PRESS-FIT 4340 FORGED 3/8 BOLTS 6.0.....	\$199.99
SCA 21CR5700716, SBC PRO COMP BUSHED 7/16 CAP-SCREW 5.7.....	\$288.25
SCA 21CR5700-2000, SBC BUSHED SMALL JOURNAL 3/8 CAP-SCREW 5.7.....	\$249.99
SCA 21CR6000716, SBC PRO COMP BUSHED 7/16 CAP SCREW 6.0.....	\$288.25



SCAT H-BEAM CONNECTING RODS

SCA 2-350-5700-2100, SBC BUSHED 4340 FORGED 7/16 CAP SCREWS 5.7.....	\$399.99
SCA 2-350-6000-2100, SBC BUSHED 4340 FORGED 7/16 CAP SCREWS 6.0.....	\$399.99



KMJ CONNECTING RODS

PCE PC4101, SBC 5.7 PRESS-FIT I-BEAM 4140 FORGED.....	\$139.99
PCE PC4102, SBC 5.7 BUSHED I-BEAM 4140 FORGED.....	\$139.99
PCE PC4104, SBC 6.0 BUSHED I-BEAM 4140 FORGED.....	\$139.99
PCE PC4131, SBC 5.7 BUSHED PRO-I-BEAM 4340 FORGED.....	\$329.99
PCE PC4132, SBC 6.0 BUSHED PRO-I-BEAM 4340 FORGED.....	\$329.99
PCE PC4112, SBC BUSHED H-BEAM 5.700 4340 FORGED.....	\$259.99
PCE PC4114, SBC BUSHED H-BEAM 6.000 4340 FORGED.....	\$259.99



FLEXPLATES / FLYWHEELS

KMJ FP305SFI, SBC INTERNAL BALANCE 153 TOOTH.....	\$45.00
KMJ FP350SFI, SBC INTERNAL BALANCE 168 TOOTH.....	\$45.00
KMJ FP400SFI, SBC EXTERNAL BALANCE 168 TOOTH.....	\$45.00
KMJ 1635000, SBC/BBC 153 TOOTH 10.5" LIGHTWEIGHT FLYWHEEL.....	\$129.99
QTI RM-901, SBC LIGHTWEIGHT 2.8LBS 153 TOOTH.....	\$67.41
QTI RM-920, SBC ULTRA-LIGHT 2.1LBS 153 TOOTH.....	\$93.09
QTI RM-6098, SBC FLEXPLATE SAFETY SHIELD SFI.....	\$45.00

BALANCERS

KMJ 350B, SBC INTERNAL BALANCE HEAVY DUTY STOCK.....	\$59.00
KMJ HBS350B, SBC INTERNAL BALANCE STEEL STRUCTURE BLACK.....	\$89.00
KMJ HBS400B, SBC EXTERNAL BALANCE STEEL STRUCTURE BLACK.....	\$95.00
KMJ HBF350B, SBC INTERNAL BALANCE FLUID FILLED BLACK.....	\$99.00
KMJ HBF400B, SBC EXTERNAL BALANCE FLUID FILLED BLACK.....	\$99.00



PISTONS AND PISTON RINGS



HOWARDS FORGED PISTONS by ROSS				
Part Number	Description	Stroke / Rod	Approx. CR w/64cc	Price
FORGED 350 PISTONS				
HOW HRC4557	4.030 BORE FLAT-TOP 2VR	3.48 / 6.0	10.7:1	\$449.99
HOW HRC4572	4.030 BORE 12.7CC DOME	3.48 / 6.0	13.6:1	\$499.99
HOW HRC4579	4.030 BORE FLAT-TOP 2VR	3.48 / 6.125	10.6:1	\$449.99
FORGED 383 PISTONS				
HOW HRC4584 ⁽¹⁾	4.030 BORE 7.8CC DOME	3.75 / 6.0	13.1:1	\$499.99
FORGED 400/377 PISTONS				
HOW HRC4569	4.155 BORE FLAT-TOP 2VR 377CID	3.48 / 6.25	10.6:1	\$469.99
HOW HRC4566 ⁽¹⁾	4.155 BORE FLAT-TOP 2VR 406CID	3.75 / 6.0	11.8:1	\$459.99
HOW HRC4561 ⁽¹⁾	4.155 BORE 6.7CC DOME 406CID	3.75 / 6.0	13.6:1	\$499.99
HOW HRC4582 ⁽¹⁾	4.155 BORE 6.7CC DOME 406CID	3.75 / 6.0	13.1:1	\$529.99
HOW HRC4568	4.155 BORE FLAT-TOP 420 STROKER	3.875 / 6.0	11.9:1	\$469.99
HOW HRC4581	4.155 BORE 1CC DOME 420 STROKER	3.875 / 6.0	13:1	\$529.99
HOW HRC4562	4.155 BORE 5.6CC DOME 434 STROKER	4.000 / 6.0	13.9:1	\$529.99
HOW HRC4580	4.155 BORE 1CC DOME 434 STROKER	4.000 / 6.0	13.4:1	\$529.99

⁽¹⁾Requires 1/16" 1/16" 1/8" piston rings



SPEED-PRO HYPEREUTECTIC PISTONS



Part Number	Description*	Stroke / Rod	Approx. CR w/64cc	Price
FMP H660CP	327 CID FLAT-TOP	3.25/5.7	9.5:1	\$169.99
FMP H631CP	350 FLAT-TOP 2VR	3.48/5.7	9.73:1	\$169.99
FMP H618CP	350 .125" DOME	3.48/5.7	10.9:1	\$169.99
FMP H617CP	350 .275" DOME	3.48/5.7	12.2:1	\$169.99
FMP H859CP	383 STROKER DISH	3.75/5.7	9.6:1	\$169.99
FMP H860CP	383 STROKER FLAT-TOP	3.75/5.7	9.5:1	\$179.99
FMP H635CP	383 STROKER DOME	3.75/5.7	12.6:1	\$189.99
FMP H616CP	400 FLAT-TOP 4VR	3.75/5.7	13.3:1	\$169.99
FMP H615CP	400 DISH	3.75/5.7	10.8:1	\$179.99
FMP H634CP	400 .200" DOME	3.75/5.7	13.3:1	\$159.99

*Sizes available in STD, .030, .040, .060 for most pistons.

PROBE FORGED PISTONS				
Part Number	Description	Stroke / Rod	Approx. CR w/64cc	Price
FORGED 350 PISTONS*				
PRB P2256F	FPS FLAT-TOP 2VR	3.48 / 5.7	10.25:1	\$299.99
PRB 12334	SRS FLAT-TOP 2VR	3.48 / 5.7	10.26:1	\$399.99
PRB 12335	SRS FLAT-TOP 2VR	3.48 / 6.0	10.26:1	\$399.99
PRB 13722	SRS 12.5CC DOME	3.48 / 5.7	12.73:1	\$419.99
PRB 13723	SRS 12.5CC DOME	3.48 / 6.0	12.73:1	\$419.99
FORGED 383 STROKER PISTONS*				
PRB P3831F	FPS FLAT-TOP 4VR	3.75 / 5.7	11:1	\$329.99
PRB P3832F	FPS -22CC DISH 4VR	3.75 / 5.7	9.12:1	\$349.99
PRB 12336	SRS FLAT-TOP 2VR	3.75 / 5.7	11:1	\$399.99
PRB 12337	SRS FLAT-TOP 2VR	3.75 / 6.0	11:1	\$399.99
PRB 12344	SRS -20.4CC DISH	3.75 / 5.7	9.3:1	\$419.99
PRB 12345	SRS -20.4CC DISH	3.75 / 6.0	9.3:1	\$419.99
PRB 13719	SRS 8CC DOME	3.75 / 6.0	12.8:1	\$419.99
PRB 13724	SRS 7.3CC DOME	3.75 / 5.7	12.7:1	\$419.99
FORGED 400/377 PISTONS*				
PRB 13956	SRS 5.2CC DOME 377	3.48 / 6.0	12:1	\$419.99
PRB 12339	SRS FLAT-TOP 2VR	3.75 / 6.0	11.5:1	\$399.99
PRB 14108	SRS 11.5CC DOME	3.75 / 6.0	14.1:1	\$439.99
PRB 14796	SRS 4.9CC DOME 421 STROKER	3.875 / 6.0	13.1:1	\$439.99
PRB 14109	SRS 7.5CC DOME 434 STROKER	4.000 / 6.0	14.1:1	\$459.99

*Sizes available in STD, .030, .040, .060 for most pistons.



HASTINGS PISTON RINGS

Sizes available in STD, .030, .040, .060

- HAS 139, 4.000 5/64 X 5/64 X 3/16 CAST STANDARD FIT \$23.99
- HAS 2M139, 4.000 5/64 X 5/64 X 3/16 MOLY STANDARD FIT \$35.99
- HAS 2M5523, 4.000 1/16 X 1/16 X 3/16 PLASMA-MOLY FILE/STANDARD FIT \$99.99
- HAS 661, 4.125 5/64 X 5/64 X 3/16 CAST STANDARD FIT \$34.99
- HAS 2M661, 4.125 5/64 X 5/64 X 3/16 MOLY STANDARD FIT \$49.99
- HAS 2M5529, 4.125 1/16 X 1/16 X 3/16 PLASMA-MOLY FILE/STANDARD FIT \$109.99
- HAS 2M683, 4.250 5/64 X 5/64 X 3/16 MOLY STANDARD FIT \$54.99
- HAS 2M5519, 4.250 1/16 X 1/16 X 3/16 PLASMA-MOLY FILE/STANDARD FIT \$119.99

Or Call us at: 515-733-2890





BEARINGS, RE-RING KITS, BLOCK PARTS



CLEVITE 77[®]

ENGINE BEARINGS

SMALL BLOCK CHEVY RE-RING KIT

Includes piston rings, Fel-Pro gasket set, and ACL rod & main bearings

KMJ RRC1C40P, SBC 350 CAST 5/64 / 3/16 P-SERIES BEARINGS	\$99.99
KMJ RRM1C40P, SBC 350 MOLY 5/64 / 3/16 P-SERIES BEARINGS	\$109.99
KMJ RRC1C41P, SBC 400 CAST 5/64 / 3/16 P-SERIES BEARINGS	\$139.99
KMJ RRM1C40H, SBC 350 MOLY 5/64 / 3/16 H-SERIES BEARINGS	\$189.99
KMJ RRM1C41H, SBC 400 MOLY 5/64 / 3/16 H-SERIES BEARINGS	\$199.99
KMJ RRM2C40H, SBC 350 MOLY 1/16 / 3/16 H-SERIES BEARINGS	\$259.99
KMJ RRM2C41H, SBC 400 MOLY 1/16 / 3/16 H-SERIES BEARINGS	\$269.99



ACL ENGINE BEARINGS

It's a tradition that they began in Australia more than 50 years ago: a commitment to innovative design, engineering and manufacturing excellence. Thus, they gained the distinction as primary designer and manufacturer of engine bearings for GM, Ford and Toyota.

ACL 8B663P, SBC LARGE JOURNAL ROD BEARINGS 2.1 P-SERIES	\$15.99
ACL 8B745P, SBC SMALL JOURNAL ROD BEARINGS 2.0 P-SERIES	\$24.99
ACL 5M909P, SBC LARGE JOURNAL 350 MAIN BEARINGS P-SERIES	\$24.99
ACL 5M1038P, SBC 400 MAIN BEARINGS P-SERIES	\$39.99
ACL 5M429P, SBC SMALL JOURNAL 327/350 MAIN BEARINGS P-SERIES	\$37.99
ACL 8B663H, SBC LARGE JOURNAL ROD BEARINGS 2.1 H-SERIES	\$64.99
ACL 5M909H, SBC LARGE JOURNAL 350 MAIN BEARINGS, H-SERIES	\$64.99
ACL 5M1038H, SBC 400 MAIN BEARINGS H-SERIES	\$69.99
ACL 8B743P, BBC ROD BEARINGS P-SERIES	\$29.99
ACL 5M829P, BBC MAIN BEARINGS P-SERIES	\$29.99
ACL 8B634P, SBF 260 289 302 ROD BEARINGS P-SERIES	\$27.99
ACL 5M590P, SBF 260 289 302 MAIN BEARINGS P-SERIES	\$27.99
ACL 8B527P, BBM 383 400 440 ROD BEARINGS P-SERIES	\$54.99
ACL 5M876P, BBM 383 400 MAIN BEARINGS P-SERIES	\$64.99
ACL 5M1277P, BBM 413/440 MAIN BEARINGS P-SERIES	\$116.99



CAMSHAFT BEARINGS

DUR CH-8, SMALL BLOCK CHEVY STD	\$14.99
DUR CHP-8, SMALL BLOCK CHEVY HP	\$28.99
DUR CH-12, BIG BLOCK CHEVY STD	\$17.99
DUR F-18, FORD 351W STD	\$14.99
DUR PD-16, SMALL BLOCK MOPAR STD	\$25.99
DUR PD-17, BIG BLOCK MOPAR STD	\$17.99

CLEVITE 77 ENGINE BEARINGS

Engine Performance is a key aspect to winning races. More NASCAR races have been won with Clevite bearings. Trust the MAHLE Clevite Family of brands.

MIC CB663P, SBC LARGE JOURNAL ROD BEARINGS 2.1 P-SERIES	\$26.99
MIC CB745P, SBC SMALL JOURNAL ROD BEARINGS 2.0 P-SERIES	\$36.99
MIC MS909P, SBC LARGE JOURNAL 350 MAIN BEARINGS P-SERIES	\$32.99
MIC MS1038P, SBC 400 MAIN BEARINGS P-SERIES	\$67.99
MIC MS429P, SBC SMALL JOURNAL MAIN BEARINGS P-SERIES	\$61.99
MIC CB663H, SBC LARGE JOURNAL ROD BEARINGS 2.1 H-SERIES	\$79.99
MIC CB745H, SBC SMALL JOURNAL ROD BEARINGS 2.0 H-SERIES	\$76.99
MIC MS909H, SBC LARGE JOURNAL 350 MAIN BEARINGS H-SERIES	\$86.99
MIC MS1038H, SBC 400 MAIN BEARINGS H-SERIES	\$75.99
MIC MS429H, SBC SMALL JOURNAL MAIN BEARINGS H-SERIES	\$102.99
MIC CB743P, BBC ROD BEARINGS P-SERIES	\$49.99
MIC MS829P, BBC MAIN BEARINGS P-SERIES	\$49.99
MIC CB743H, BBC ROD BEARINGS H-SERIES	\$99.99
MIC MS829H, BBC MAIN BEARINGS H-SERIES	\$105.99
MIC CB634P, SBF 260 289 302 ROD BEARINGS P-SERIES	\$36.99
MIC MS590P, SBF 260 289 302 MAIN BEARINGS P-SERIES	\$35.99

SMALL BLOCK CHEVY BEARING SPACERS

Allows use of a 350 crank in a 400 block.

KMJ 1120, 377 BEARING SPACERS SET	\$49.99
---	---------



ASSEMBLY PARTS AND ACCESSORIES

MIC 2800-B1, CONNECTING ROD BOLT PROTECTORS (PAIR)	\$2.50
MIC 2800-B2, CLEVITE 77 BEARING GUARD ASSEMBLY LUBE	\$4.99
HOW 99000, HOWARDS MAX ZPM ZINC MOLY CAM BREAK-IN LUBE	\$6.99

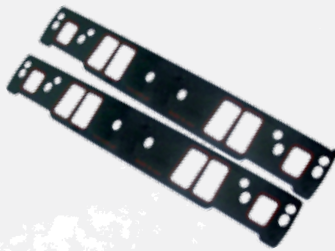


FREEZE PLUG SETS

MEL MPE-100BR, SBC 350 BRASS	\$9.99
MEL MPE-100R, SBC 350 STEEL	\$4.99
MEL MPE-101BR, SBC 400 BRASS	\$12.99
MEL MPE-102BR, BIG BLOCK CHEVY BRASS	\$12.99
MEL MPE-108BR, SBF 302 BRASS	\$7.99
MEL MPE-113BR, SMALL BLOCK MOPAR BRASS	\$13.69
MEL MPE-114BR, BIG BLOCK MOPAR BRASS	\$8.99



KMJ BRAND GASKETS



INTAKE GASKETS

KMJ 1255, SBC VORTEC SMALL RACE .060 PAIR\$15.99

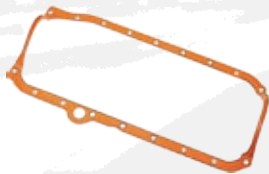


EXHAUST GASKETS

PCE PCS201, SBF COPPER HEADER GASKETS PAIR\$19.99
 PCE PCS202, BBC COPPER HEADER GASKETS PAIR\$19.99
 PCE PCS205, SBC COPPER HEADER GASKETS PAIR\$19.99

PROCOMP MLS HEAD GASKETS

PCE PCS210, SBC 350 383 327 MLS 4.065 .041 PAIR\$49.99
 PCE PCS211, BBC 427 454 MLS 4.580 .041 PAIR\$49.99
 PCE PCS212, SBF 351C MLS 4.065 .041 PAIR\$49.99
 PCE PCS213, SBC 400 MLS 4.200 .041 STEAM-HOLES PAIR\$49.99
 PCE PCS214, SBF 289 302 351W MLS 4.065 .041\$49.99



OIL PAN GASKETS

KMJ 1803U, SBC LH DIPSTICK 4-PIECE 2-PC REAR MAIN CORK\$12.99
 RPC S7489, SBC LH DIPSTICK 1-PIECE REUSABLE 2-PC RM\$16.99
 KMJ 3039, SBC RH DIPSTICK 1-PIECE REUSABLE 1-PC RM\$25.00



VALVE COVER GASKETS

RPC S7484X, SBC PERIMETER SILICONE REUSABLE STEEL CORE\$9.99
 RPC S7488, SBC CENTER BOLT RUBBER REUSABLE VORTEC\$12.99
 KMJ 1603, SBC PERIMETER THICK CORK\$12.99
 KMJ 1604, SBC PERIMETER 5/16 CORK STEEL CORE\$24.99



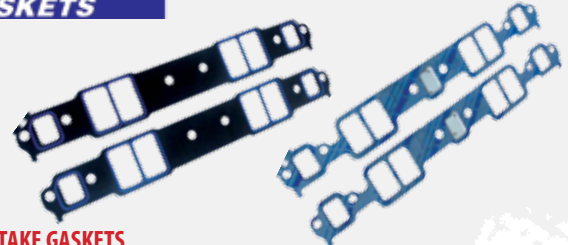
OTHER GASKETS

KMJ TCS5124-1, SBC TIMING COVER GASKET\$2.99
 FEL 16202, FEL-PRO SBC TIMING COVER FRONT SEAL\$6.99
 FEL 2900, FEL-PRO SBC 350/400 REAR MAIN SEAL\$12.99
 FEL 2909, FEL-PRO SBC 400 ALIGN-HONED REAR MAIN SEAL\$29.99
 FEL 35062, SBC/BBC THERMOSTAT / WATER OUTLET HOUSING\$1.49
 FEL 5152, SBC WATER PUMP MOUNTING EACH\$.99
 FEL 6579, SBC FUEL PUMP MOUNTING TO PLATE\$1.29
 FEL 5182, SBC FUEL PUMP PLATE TO BLOCK\$1.29

FEL-PRO

PERFORMANCE GASKETS

FEL-PRO GASKETS

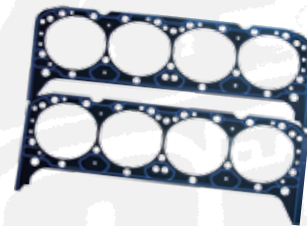


FEL-PRO INTAKE GASKETS

FEL 1204, SBC STOCK INTAKE GASKET PAIR\$14.99
 FEL 1205, SBC SMALL RACE 1.28X2.09 .060 PAIR\$15.99
 FEL 1206, SBC MED RACE 1.34X2.21 .060 PAIR\$15.99

FEL-PRO EXHAUST GASKETS

FEL 1404, SBC HEADER/MANIFOLD PERFORATED STEEL 1.5X1.5 PAIR\$16.99
 FEL 1405, SBC HEADER/MANIFOLD PERFORATED STEEL 1.55X1.55 PAIR\$21.99



FEL-PRO HEAD GASKETS

FEL 1003, SBC 4.166 .041 IRON HEADS PAIR\$64.99
 FEL 1004, SBC 1.190 .041 IRON HEADS PAIR\$64.99
 FEL 1010, SBC 4.166 .039 ALUMINUM HEAD PAIR\$72.99
 FEL 1034, SBC 4.200 .041 STEAM HOLES PAIR\$74.99
 FEL 1044, SBC 4.200 .051 STEAM HOLES PAIR\$91.99



FEL-PRO OIL PAN GASKETS

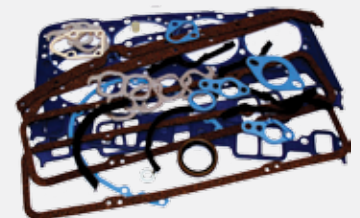
FEL 1803, SBC 4-PIECE 2-PC REAR MAIN\$13.99
 FEL 1886, SBC RH DIPSTICK 1-PIECE REUSABLE 1986+ 1-PC REAR MAIN\$44.50
 FEL 1804, BBC 66-90 2-PC REAR MAIN\$16.95
 FEL 1809, SBF 289 302 RUBBER-COATED FIBER\$16.50
 FEL 1810, SBF 351W RUBBER-COATED FIBER\$16.50

FEL-PRO VALVE COVER GASKETS

FEL 1604, SBC PERIMETER 5/16 CORK STEEL CORE FELPRO\$31.99

FEL-PRO

PERFORMANCE GASKETS



FEL-PRO COMPLETE GASKET SETS

FEL 260-1000, SBC PRE-87 PERMA-TORQUE\$39.99
 FEL 260-3013, SBC PRE-87 HP COMPETITION KIT\$129.99
 FEL 260-1478, SBC 86+ 1-PC REAR MAIN TBI/TPI SET\$164.99



OIL PANS, PUMPS, AND ACCESSORIES



STOCK-APPEARING CHEATER 5QT

KEV 2001, SBC 5-QT CHEATER STOCK APPEARING 2-PC REAR MAIN LH DIPSTICK.....	\$84.95
KEV 1001, PICKUP TUBE FOR HIGH VOLUME OIL PUMP.....	\$22.00
KEV 1001-1, PICKUP TUBE FOR STOCK VOLUME OIL PUMP.....	\$22.00



STOCK CAR 7QT

KEV 1087, KEVKO SBC STOCK CAR 7QT 7 1/2" DEEP.....	\$104.95
KEV 1003, PICKUP TUBE FOR HIGH VOLUME OIL PUMP.....	\$22.00
KEV 1003-1, PICKUP TUBE FOR STANDARD VOLUME OIL PUMP.....	\$22.00



STOCK CAR 8QT

KEV 1089, KEVKO SBC STOCK CAR 8QT 8" DEEP.....	\$104.95
KEV 1008, PICKUP TUBE FOR HIGH VOLUME OIL PUMP.....	\$22.00
KEV 1007, PICKUP TUBE FOR STANDARD VOLUME OIL PUMP.....	\$22.00



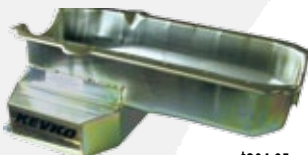
MODIFIED 8QT

KEV 1090, KEVKO SBC MODIFIED 8QT 7 1/4" DEEP.....	\$104.95
KEV 1005, PICKUP TUBE FOR HIGH VOLUME OIL PUMP.....	\$22.00
KEV 1003, PICKUP TUBE FOR HIGH VOLUME OIL PUMP.....	\$22.00



MODIFIED SPORTSMAN 8QT

KEV 1092, KEVKO SBC SPORTSMAN 8QT 7" DEEP.....	\$204.95
KEV 1006, PICKUP TUBE FOR HIGH VOLUME OIL PUMP.....	\$22.00
KEV 1005, PICKUP TUBE FOR STANDARD VOLUME OIL PUMP.....	\$22.00
KEV 1011, PICKUP TUBE FOR 3/4" BBC HIGH VOLUME OIL PUMP (M77HV).....	\$22.00



SBC KEVKO Pans are available in LH Dipstick, RH Dipstick 2-PC Rear Main, and 1-PC Rear Main. Additional charge may apply. Call for availability..

OIL PAN AND PUMP ACCESSORIES

MEL 1555E, SBC STEEL COLAR OIL PUMP DRIVE.....	\$8.55
MEL 1577, BIG BLOCK CHEVY OIL PUMP DRIVE.....	\$12.80
MEL 1568, SMALL BLOCK FORD OIL PUMP DRIVE.....	\$9.99
MEL 1583, SMALL BLOCK FORD 351W OIL PUMP DRIVE.....	\$9.99
KMJ 1584, BIG BLOCK FORD OIL PUMP DRIVE.....	\$13.99
MEL 1572, SMALL BLOCK CHRYSLER OIL PUMP DRIVE.....	\$39.99
KMJ 1563, BIG BLOCK CHRYSLER OIL PUMP DRIVE.....	\$36.00
MOR 38550, SBC OIL PAN BOLT KIT.....	\$6.94
MOR 38350, SBC OIL PAN STUD KIT.....	\$19.47
MOR 38150, SBC OIL PUMP MOUNTING STUD.....	\$7.66

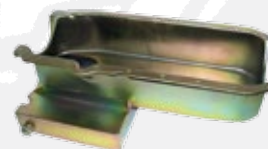


STOCK-APPEARING CHEATER 5QT

RPCS7108R, SBC LH DIPSTICK 2-PIECE RM CHEATER 5QT RAW.....	\$39.99
RPCS7108P, SBC LH DIPSTICK 2-PIECE RM CHEATER 5QT PAINTED.....	\$45.99
RPCS7108Z, SBC LH DIPSTICK 2-PIECE RM CHEATER 5QT ZINC.....	\$49.99
RPCS7110, SBC PICKUP TUBE FOR CHEATER/STOCK PANS.....	\$11.00

STOCK CAR / MODIFIED SINGLE KICKOUT

RPCS7104R, SBC LH DIPSTICK 2PC RM KICKOUT RAW.....	\$49.99
RPCS7104P, SBC LH DIPSTICK 2PC RM KICKOUT PAINTED.....	\$55.99
RPCS7104Z, SBC LH DIPSTICK 2PC RM KICKOUT ZINC.....	\$59.99
RPCS7105R, SBC RH DIPSTICK 2PC RM KICKOUT RAW.....	\$59.99
RPCS7105P, SBC RH DIPSTICK 2PC RM KICKOUT PAINTED.....	\$62.99
RPCS7105Z, SBC RH DIPSTICK 2PC RM KICKOUT ZINC.....	\$65.99
RPCS7204R, SBC RH DIPSTICK 1-PC REAR MAIN KICKOUT RAW.....	\$71.99
RPCS7204P, SBC RH DIPSTICK 1-PC REAR MAIN KICKOUT PAINTED.....	\$76.99
RPCS7204Z, SBC RH DIPSTICK 1-PC REAR MAIN KICKOUT ZINC.....	\$82.99
RPCS7106, PICKUP TUBE FOR S7104/7105/7204 PANS WITH STANDARD VOLUME OIL PUMP.....	\$11.00
RPCS7107, PICKUP TUBE FOR 7104/7105/7204 PANS WITH HIGH VOLUME OIL PUMP.....	\$11.00



MODIFIED CHAMP-STYLE DUAL KICKOUT

RPCS7101R, SBC LH DPSTK 2PC RM CHAMP STYLE DUAL KICKOUT RAW.....	\$65.99
RPCS7101P, SBC LH DPSTK 2PC RM CHAMP STYLE DUAL KICKOUT PAINTED.....	\$69.99
RPCS7101Z, SBC LH DPSTK 2PC RM CHAMP STYLE DUAL KICKOUT ZINC PLATED.....	\$72.99
RPCS7201R, SBC RH DIPSTICK 1-PC REAR MAIN CHAMP STYLE RAW.....	\$99.99
RPCS7201P, SBC RH DIPSTICK 1-PC REAR MAIN CHAMP STYLE PAINTED.....	\$102.99
RPCS7201Z, SBC RH DIPSTICK 1-PC REAR MAIN CHAMP STYLE ZINC PLATED.....	\$105.99
RPCS7102, SBC PICKUP TUBE FOR S7101/7201 PANS.....	\$11.00



OIL PUMPS

MEL M55, SBC STD VOLUME.....	\$18.99
MEL M55HV, SBC HIGH VOLUME.....	\$31.99
MEL M77, BIG BLOCK CHEVY STD VOLUME.....	\$32.99
MEL M77HV, BIG BLOCK CHEVY HIGH VOLUME.....	\$41.99
MEL M68, SMALL BLOCK FORD STD VOLUME.....	\$26.11
MEL M68HV, SMALL BLOCK FORD HIGH VOLUME.....	\$41.99
MEL M57, FORD 332-428 FE STD VOLUME.....	\$29.99
MEL M72, SMALL BLOCK CHRYSLER STD VOLUME.....	\$28.40
MEL M72HV, SMALL BLOCK CHRYSLER HIGH VOLUME.....	\$63.13
MEL M63, BIG BLOCK CHRYSLER STD VOLUME.....	\$68.99
MEL M63HV, BIG BLOCK CHRYSLER HIGH VOLUME.....	\$79.99
KEV K125, HIGH PRESSURE OIL PUMP BYPASS SPRING.....	\$4.99



VALVE COVERS, AIR CLEANERS, AND ACCESSORIES



ASSAULT RACING FABRICATED VALVE COVERS



SBC FABRICATED ALUMINUM VALVE COVERS

ARC V4001, SBC POLISHED ALUMINUM FABRICATED VALVE COVERS WITH BOLTS \$69.99

FABRICATED ALUMINUM VALVE COVERS

KMJ JM8201-2S, SBC CIRCLE TRACK FAB ALUMINUM VALVE COVERS \$69.99

KMJ JM8203-2S, SBF CIRCLE TRACK FAB ALUMINUM VALVE COVERS \$89.99

Powder Coated versions of above also available in Red, Silver, or Black add \$15.00



CHROME CLAMP-ON VALVE COVER BREATHERS

RPC S9517, 1 1/2 INCH CLAMP-ON VALVE COVER BREATHER SHEILDED \$8.25EA

RPC S9309, 1 1/2 INCH CLAMP-ON VALVE COVER BREATHER NON-SHEILDED \$7.00EA

RPC S9517X, 1 3/8 INCH CLAMP-ON VALVE COVER BREATHER SHEILDED \$8.25EA

RPC S9309X, 1 3/8 INCH CLAMP-ON VALVE COVER BREATHER NON-SHEILDED \$7.00EA



STEEL VALVE COVERS

RPC S7215R, SBC CIRCLE TRACK RAW VALVE COVERS \$15.99

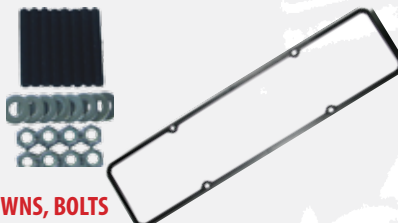
RPC S7215Z, SBC CIRCLE TRACK ZINC VALVE COVERS \$17.99

Powder Coated versions also available in Red, Silver, or Black add \$15.00

BILLET ALUMINUM PUSH-IN VALVE COVER BREATHERS W/ GROMETS

PCE PC3319PCV, BILLET ALUMINUM VALVE COVER BREATHER W/PCV PORT \$16.50EA

PCE PC3320, BILLET ALUMINUM VALV ECOVER BREATHER \$14.50EA



VALVE COVER GASKETS, HOLD-DOWNS, BOLTS

MOR 68820, SBC VALVE COVER STUD & NUT KIT \$8.99

RPC S4993, SBC CHROME VALVE COVER HOLD DOWN SET \$10.00

RPC S7484X, SBC PERIMETER SILICONE REUSABLE STEEL CORE \$9.99

RPC S7488, SBC CENTER BOLT RUBBER REUSABLE VORTEC \$12.99

KMJ 1603, SBC PERIMETER THICK CORK \$12.99

KMJ 1604, SBC PERIMETER 5/16 CORK STEEL CORE \$24.99

FEL 1604, SBC PERIMETER 5/16 CORK STEEL CORE FELPRO \$31.99



CAST ALUMINUM VALVE COVERS

KMJ 17156, SBC CAST ALUMINUM CIRCLE TRACK VALVE COVERS \$49.00

Powder coated version s also available in Red, Silver, or Black add \$15.00

POLISHED CAST ALUMINUM VALVE COVERS

RPC S6140, SBC POLISHED ALUMINUM CIRCLE TRACK VALVE COVERS \$68.38

RPC S6150, SBC CENTERBOLT CRCL TRK POLISHED ALUMINUM VALVE COVERS \$85.47



AIR CLEANERS AND ACCESSORIES

KMJ S2295KIT-1, 14" AIR CLEANER KIT WITH 1/2" SPACER (FILTER NOT INCLUDED) \$29.99

KMJ S2295KIT-2, 14" AIR CLEANER KIT WITH 1" SPACER (FILTER NOT INCLUDED) \$29.99

KMJ S2295KIT-3, 14" AIR CLEANER KIT WITH 2" SPACER (FILTER NOT INCLUDED) \$29.99

PCE PC3335E, AIR FILTER RE-USABLE ELEMENT 14X2 \$14.99

PCE PC3336E, AIR FILTER RE-USABLE ELEMENT 14X3 \$16.66

PCE PC3337E, AIR FILTER RE-USABLE ELEMENT 14X4 \$19.99



K&N FILTER RE-CHARGE KIT

KNN 99-5000, FILTER RE-CHARGE KIT INCLUDES CLEANER AND OIL \$10.99

Or Call us at: 515-733-2890





ROCKER ARMS AND VALVETRAIN

KMJ MAXIMUM RACE SERIES FULL ROLLER ROCKERS

Designed to meet the demands of most high-lift roller camshaft profiles. Specially designed to accommodate larger valve springs and retainers. CNC machined pushrod cups and heat-treated roller tips. Precision needle and cage roller bearings with internal oiling system ensure long lasting performance.

Full Race Features but at street rocker prices!



STAINLESS STEEL FULL-ROLLER ROCKERS FULL SET

KMJ SRA3501538, SMALL BLOCK CHEVY SS ROLLER ROCKERS 1.5 3/8	\$159.99
KMJ SRA35015716, SMALL BLOCK CHEVY SS ROLLER ROCKERS 1.5 7/16	\$159.99
KMJ SRA3501638, SMALL BLOCK CHEVY SS ROLLER ROCKERS 1.6 3/8	\$159.99
KMJ SRA35016716, SMALL BLOCK CHEVY SS ROLLER ROCKERS 1.6 7/16	\$159.99
KMJ SRA45417716, BIG BLOCK CHEVY SS ROLLER ROCKER ARMS 1.7 7/16	\$159.99

4340 STEEL ROLLER-TIP ROCKERS FULL SET

PRW 0835001, SBC 4340 1.5 3/8 ROLLER-TIP ROCKERS	\$86.04
PRW 0835004, SBC 4340 1.6 3/8 ROLLER-TIP ROCKERS	\$86.04
PRW 0835020, SBC 4340 1.5 7/16 ROLLER-TIP ROCKERS	\$86.04
PRW 0835021, SBC 4340 1.6 7/16 ROLLER-TIP ROCKERS	\$86.04



ROCKER ARM STUDS FULL SET

PNR RM-348, 3/8 SCREW-IN NON-SHOULDER STUDS SET	\$16.00
PCE PC2411, 3/8 SCREW-IN SHOULDERED STUDS SET	\$22.50
PCE PC2412, 7/16 SCREW-IN SHOULDERED STUDS SET	\$22.50
PCE PC2413, 7/16 SCREW-IN SHOULDERED X-TRA LONG	\$32.00
ARP 134-7101, 3/8 SCREW-IN SHOULDERED ARP STUDS SET	\$49.00
ARP 100-7101, 7/16 SCREW-IN SHOULDERED ARP STUDS SET	\$42.00



VALVE SPRINGS FULL SET

KMJ RV943X, 2-28 .550 MAX STOCK DIAMETER	\$24.99
KMJ RV1943X, .600 MAX LIFT STOCK DIAMETER	\$39.00
KMJ 1300, .600 MAX 1.440 DUAL SPRINGS	\$52.00



VALVE SPRINGS, LOCKS, AND RETAINERS KITS

KMJ RV943XKIT, 1.260 STOCK DIAMETER .550 LIFT KIT	\$39.99
KMJ RV1943XKIT, 1.260 STOCK DIAMETER .600 LIFT KIT	\$54.99
KMJ 1300KIT, 1.440 DIAMETER .600 LIFT DUAL SPRINGS KIT	\$89.99



ALUMINUM FULL-ROLLER ROCKERS FULL SET

KMJ ARA3501538, SMALL BLOCK CHEVY ALUMINUM ROLLER ROCKERS 1.5 3/8	\$159.99
KMJ ARA3501538SA, SMALL BLOCK CHEVY ALUM ROCKERS SELF-ALIGN/VORTEC 1.5 3/8	\$159.99
KMJ ARA3501638, SMALL BLOCK CHEVY ALUMINUM ROLLER ROCKERS 1.6 3/8	\$159.99
KMJ ARA3501638SA, SMALL BLOCK CHEVY ALUM ROCKERS SELF-ALIGN/VORTEC 1.6 3/8	\$159.99
KMJ ARA35015716, SMALL BLOCK CHEVY ALUMINUM ROLLER ROCKERS 1.5 7/16	\$159.99
KMJ ARA35015716SA, SMALL BLOCK CHEVY ALUM ROCKERS SELF-ALIGN/VORTEC 1.5 7/16	\$159.99
KMJ ARA35016716, SMALL BLOCK CHEVY ALUMINUM ROLLER ROCKERS 1.6 7/16	\$159.99
KMJ ARA35016716SA, SMALL BLOCK CHEVY ALUM ROCKERS SELF-ALIGN/VORTEC 1.6 7/16	\$159.99
KMJ ARA45417716, BIG BLOCK CHEVY 1.7 7/16 ALUMINUM ROLLER ROCKERS	\$169.99
KMJ ARA3021638, SMALL BLOCK FORD 289 302 1.6 3/8 ALUMINUM ROLLER ROCKERS	\$159.99
KMJ ARA30216716, SMALL BLOCK FORD 289 302 1.6 7/16 ALUMINUM ROLLER ROCKERS	\$159.99

SMALL BLOCK CHEVY

ALUMINUM FULL-ROLLER ROCKERS FULL SET

KMJ PM011, SBC 1.5 3/8 ALUMINUM ROLLER ROCKERS	\$129.99
KMJ PM012, SBC 1.5 7/16 ALUMINUM ROLLER ROCKERS	\$129.99
KMJ PM013, SBC 1.6 3/8 ALUMINUM ROLLER ROCKERS	\$129.99
KMJ PM014, SBC 1.6 7/16 ALUMINUM ROLLER ROCKERS	\$129.99



GUIDEPLATES FULL SET

PCE PC4242, SBC NON-ADJUSTABLE 5/16 FLAT GUIDEPLATES	\$16.99
PCE PC4244, SBC NON-ADJUSTABLE 5/16 RAISED GUIDEPLATES	\$16.99



PUSHRODS FULL SET

KMJ PR34B, SBC STOCK REPLACEMENT PUSHRODS SET	\$20.00
KMJ HS537, SBC STD LEN 7.790 HARDENED PUSHRODS SET	\$29.99
KMJ HS577, SBC +.100 7.900 HARDENED PUSHRODS SET	\$29.99
KMJ HS582, SBC +.150 7.950 HARDENED PUSHRODS SET	\$29.99
KMJ CM737, SBC STD LEN 7.790 CHROMOLY PUSHRODS	\$69.99
KMJ CM757, SBC +.050 7.850 CHROMOLY PUSHRODS	\$69.99
KMJ CM777, SBC +.100 7.900 CHROMOLY PUSHRODS	\$69.99
KMJ CM782, SBC +.150 7.950 CHROMOLY PUSHRODS	\$69.99
KMJ CM783, SBC +.200 8.000 CHROMOLY PUSHRODS	\$69.99



VALVE LOCKS AND RETAINERS FULL SETS

KMJ 2000-32, 7° VALVE SPRING LOCKS	\$4.99
KMJ 2500, 7° 1.260 VALVE SPRING RETAINERS	\$20.00
KMJ 125RLKIT, 7° 1.260 LOCKS & RETAINERS KIT	\$22.00
KMJ 2650, 7° 1.440 VALVE SPRING RETAINERS	\$34.00
KMJ 2750, 7° 1.550 VALVE SPRING RETAINERS	\$63.84

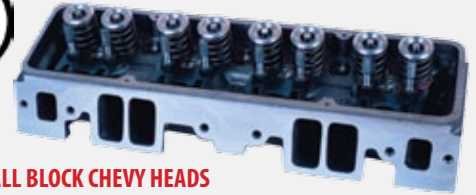


CYLINDER HEADS AND BLOCKS



DART SMALL BLOCK CHEVY IRON EAGLE CYLINDER HEADS

Using Speed Flow technology, computerized modeling, and physical testing, Dart has developed more efficient port designs with improved velocity and flow capabilities, and the results are these Iron Eagle Platinum cylinder heads. The combustion chamber of these heads has been redesigned, and the casting walls made cleaner, for greater breathing characteristics and more controllable combustion. Also featured are hardened exhaust seats for better durability with unleaded fuel, and a 5-angle competition valve job on the intake, with a full radius on the exhaust valve. Most Iron Eagle heads also accept most stock bolt-on components. Standard 23 degree valve angle allows use of off the shelf pistons and valve train components. Standard port location and intake bolt pattern fit most manifolds. Pushrod holes are enlarged for clearance with high ratio rocker arms. Heart shaped chambers improve combustion efficiency while still fitting most standard pistons. Multi-angle intake seats and radiused exhaust seats dramatically increase airflow. Hardened exhaust seats are compatible with unleaded gasoline. Manganese bronze intake valve guides and phosphorous bronze exhaust valve guides extend cylinder head life. Spark plug holes are machined for tapered seat 5/8" hex "peanut" spark plugs. Dual bolt pattern accepts flange mount and center bolt valve covers. Iron Eagle heads are all sold individually.



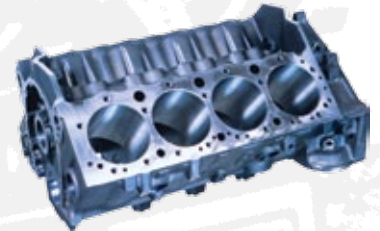
DART IRON EAGLE SMALL BLOCK CHEVY HEADS

DRT 10310010P, IRON EAGLE SBC 200 CYLHEAD 64CC CHAMBER ANGLE PLUG	\$401.27/EA
DRT 10320010P, IRON EAGLE SBC 200 CYLHEAD 64CC CHAMBER ANGLE PLUG	\$401.27/EA
DRT 10520020PF, IRON EAGLE SBC 215 CYLHEAD 49CC CHAMBER STRAIGHT PLUG	\$401.27/EA
DRT 10510020P, IRON EAGLE SBC 215 CYLHEAD 64CC CHAMBER STRAIGHT PLUG	\$401.27/EA
DRT 10510020PF, IRON EAGLE SBC 215 CYLHEAD 49CC CHAMBER STRAIGHT PLUG	\$401.27/EA
DRT 10520020P, IRON EAGLE SBC 215 CYLHEAD 64CC CHAMBER STRAIGHT PLUG	\$401.27/EA
BARE CASTINGS STARTING AT	\$779.98/PR
FULLY ASSEMBLED STARTING AT	\$929.99/PR

DART LITTLE M SPORTSMAN SMALL BLOCK CHEVY CYLINDER BLOCK

Little M Sportsman, 350 mains, 9.025 deck, 4.125 cylinder bore.

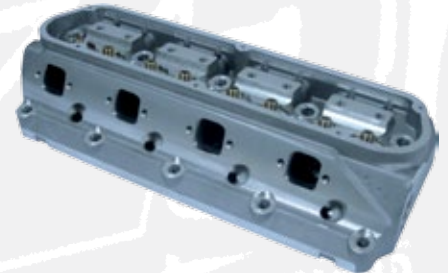
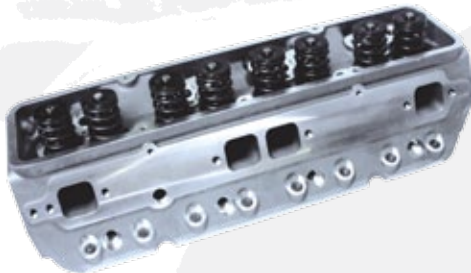
The Sportsman block shares most of the Little Ms best features, but saves you money by using ductile iron main bearing caps (4 bolt on the center three and 2 bolt on the ends), and employing a rear external oil feed, crossover and restrictor provision. Extra thick cylinder walls resist cracking and improve ring seal for more power. Scalloped outer water jacket walls improve coolant flow around the cylinder barrels to equalize temperatures. Priority main oiling system directs oil to the main bearings first for more dependable lubrication. Blind tapped head bolt holes prevent water leaks. Extra thick decks ensure reliable head gasket seal. Standard small block deck height allows use of off the shelf parts. Splayed outer bolts on middle main bearing caps prevent cracks. Open lifter valley improves return to oil pan. Enlarged lifter bosses accommodate offset and oversize lifters. Nodular iron main bearing caps. Utilizes standard pan, oil pump and two piece seal. Rear external oil feed, crossover and restrictor provision. Cam bearings, freeze plugs and dowels are not included.



DART LITTLE M SPORTSMAN SMALL BLOCK CHEVY CYLINDER BLOCK

DRT 31151211, LITTLE M SPORTSMAN SMALL BLOCK	\$2,149.99
--	------------

KMJ ALUMINUM CYLINDER HEADS



New bare cylinder heads, ready for assembly. They will accept standard off-the-shelf items such as pistons, rockers, pushrods, etc...

Bare heads feature:

- Hardened exhaust seats
- Bronze valve guides
- Extra pushrod clearance
- Threaded accessory holes
- Extra-thick deck for additional milling and stability.

Rocker arm stud boss drilled for 7/16 Coarse thread for 3/8 or 7/16 screw-in studs, also available. Saves nearly 20lbs. per head over stock cast iron!

BARE ALUMINUM CYLINDER HEADS (PAIR)

PCE PC3002S, SBC 190CC STRAIGHT PLUG 64CC CHAMBER	\$449.99
PCE PC3002A, SBC 190CC ANGLE PLUG 64CC CHAMBER	\$449.99
ARC SBC20064S, SBC 200CC STRAIGHT PLUG 64CC CHAMBER*	\$449.99
ARC SBC20064A, SBC 200CC ANGLE PLUG 64CC CHAMBER*	\$449.99
PCE PC3003S, SBC 210CC STRAIGHT PLUG 64CC CHAMBER*	\$449.99
PCE PC3003A, SBC 210CC STRAIGHT PLUG 64CC CHAMBER*	\$449.99
PCE PC3021-396B, BBC 300CC OVAL PORT 115CC CHAMBER	\$799.99
PCE PC3021B, BBC 320CC RECTANGLE PORT 115CC CHAMBER	\$799.99
PCE PC3028B, BBC 360CC RECTANGLE CNC PORT 125CC CHAMBER	\$1379.99
PCE PC3037B, SBF 302/351 190CC 60CC CHAMBER	\$459.99
PCE PC3038B, SBF 302/351 210CC 60CC CHAMBER	\$459.99

*Intake runners on these heads are slightly raised and much larger than stock. Use of a large, single-plane intake manifold is usually required.

Including all features of the bare heads,

Assembled Heads feature:

- Stainless Steel Alloy 1-piece valves.
- SBC & Ford accepts up to .650" lift for most flat-tappet applications
- Ford heads use SBC +.100 valves
- BBC accepts up to .700" lift for most flat-tappet applications
- BBC heads include +.100/+.250 valves
- Chromoly steel retainers
- Hardened steel valve locks
- Multi-angle valve job
- Ready to bolt on

ASSEMBLED ALUMINUM CYLINDER HEADS (PAIR)

PCE PC3002CS, SBC 190CC STRAIGHT PLUG	\$649.99
PCE PC3002AC, SBC 190CC ANGLE PLUG	\$649.99
ARC SBC20064SC, SBC 200CC STRAIGHT PLUG*	\$649.99
ARC SBC20064AC, SBC 200CC ANGLE PLUG*	\$649.99
PCE PC3003SC, SBC 210CC STRAIGHT PLUG*	\$649.99
PCE PC3003AC, SBC 210CC STRAIGHT PLUG*	\$649.99
PCE PC3021-396C, BBC 300CC OVAL PORT	\$949.99
PCE PC3021C, BBC 320CC RECTANGLE PORT	\$949.99
PCE PC3037C, SBF 302/351 190CC	\$649.99
PCE PC3038C, SBF 302/351 210CC	\$649.99

Or Call us at: 515-733-2890





HYDRAULIC CAM & LIFTER KITS

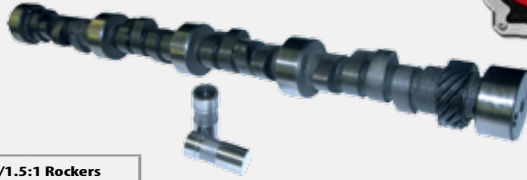
Howards Matched Hydraulic Flat Tappet Cam & Lifter Kits



These performance cams and matched lifters are simply the best dollar value in the business! MADE IN USA! Great for street/strip applications, they produce optimum torque, horsepower and RPMs, while meeting tight budget requirements. Howards hydraulic profile cams & lifters are manufactured using the latest technology and software. The result? They provide increased power, improved mileage and better overall performance. For state-of-the-art, matched valvetrain components, Howards is the clear choice for running with the best!

Part Number	Application	Lift w/1.5	Adv Dur	Duration @ .050"	Lobe Sep
Small Block Chevy Hydraulic Cam & Lifter Kits \$139.99					
HOW CL112011	Good Low & Mid-Range torque, Good in PU, 4X4	.420/.420	280/280	208/208	111
HOW CL110931	Strong Low & Mid-Range Torque	.447/.447	288/288	214/214	111
HOW CL112431	Hot Street, 4bbl & Headers Recommended	.449/.449	290/290	224/224	108
HOW CL110991	Street / Strip, Headers, 4bbl & Low Gears Recommended	.470/.470	288/288	220/220	108
HOW CL110951	Street / Strip, Headers, 4bbl & Low Gears Recommended	.470/.470	286/296	220/230	110
HOW CL112031	Broad Power Band, works well in Heavy Vehicles	.480/.480	288/288	232/232	108
HOW CL112041	E.T. Brackets, Strong Mid & Upper End Power	.510/.510	302/302	246/246	109
Part Number	Application	Lift w/1.7	Adv Dur	Duration @ .050"	Lobe Sep
Big Block Chevy Hydraulic Cam & Lifter Kits \$139.99					
HOW CL120021	Exceptional Torque, Good in PU, 4X4, RV	.478/.503	282/292	204/214	112
HOW CL122501	Great Low End Torque, Good Fuel Economy	.460/.460	288/300	204/208	112
HOW CL120031	Great Low & Mid, Heavy Vehicle OK	.502/.525	290/300	215/225	112
HOW CL122521	Excellent in Performance & Marine	.500/.505	310/322	222/234	115
HOW CL120941	Stron Mid, Needs Headers & 4bbl	.525/.525	310/310	224/224	111
Part Number	Application	Lift w/1.5	Adv Dur	Duration @ .050"	Lobe Sep
Chrysler BB 361-440 Hydraulic Cam & Lifter Kits \$154.99					
HOW CL720931	Super Low end and Mid-Range, Good Idle	.447/.447	292/292	214/214	111
Part Number	Application	Lift w/1.6	Adv Dur	Duration @ .050"	Lobe Sep
Ford 221-302 Hydraulic Cam & Lifter Kits \$134.99					
HOW CL210021	Good Low & Mid, Good in PU, 4X4, RV	.450/.474	280/288	204/214	112
HOW CL211031	Good Idle, Street, Off-Road, Towing, Fuel Economy	.459/.459	294/294	214/214	111
HOW CL210031	Broad Power Band, Hot Street, Marine	.474/.498	288/298	214/224	112
Part Number	Application	Lift w/1.6	Adv Dur	Duration @ .050"	Lobe Sep
Ford 351W Hydraulic Cam & Lifter Kits \$139.99					
HOW CL220931	Lopey Idle, Excellent Street Performance	.479/.479	292/292	214/214	110
Part Number	Application	Lift w/1.73	Adv Dur	Duration @ .050"	Lobe Sep
Ford 429-460 Hydraulic Cam & Lifter Kits \$149.99					
HOW CL242201	Strong Bottom End, Great Daily Usage Cam	.495/.495	298/298	218/218	110
HOW CL240931	Hot Performance Street / Marine	.514/.514	292/292	214/214	114
Part Number	Application	Lift w/1.5	Adv Dur	Duration @ .050"	Lobe Sep
Pontiac v8 Hydraulic Cam & Lifter Kit \$149.99					
HOW CL410961	Hot Street / Strip Performance	.472/.472	296/296	230/230	108

CAMSHAFTS, TIMING CHAINS, AND ACCESSORIES



\$179.00

CIRCLE TRACK SOLID CAM & LIFTER KITS

Part No.	Duration @ .050"		Advertised Duration		Lift w/1.5:1 Rockers		Lobe Sep	Valve Lash	Application
	Intake	Exhaust	Intake	Exhaust	Intake	Exhaust			
KMJ 101	256	264	292	300	.506	.506	105	.026/.026	Hobby Stock 2BBL 3/8 to 1/2mi
KMJ 102	256	264	294	300	.546	.565	105	.026/.026	IMCA Modified 11:1+ 355CID+ 3000-7000 RPM
KMJ 103	250	260	286	296	.533	.553	106	.026/.028	Modified/Stock Car 4BBL 11:1 3500-7200 RPM
KMJ 104	251	264	285	300	.536	.527	106	.016/.016	IMCA Modified 12:1+ Dry & Slick Track 3500-7200 RPM
KMJ 105	251	248	298	294	.508	.508	106	.030/.030	Hobby Stock 9:1 355CID 3600-7000 RPM
KMJ 106	252	255	283	285	.544	.553	102	.016/.016	Stock Car 350CID 2BBL 3000-6500 RPM
KMJ 107	257	257	289	288	.553	.561	102	.016/.016	IMCA Modified, 12:1 Max, 4000-7100 RPM
KMJ 108	248	251	279	282	.531	.542	106	.016/.016	Hobby/Stock Car MONSTER TORQUE 2700-6800 RPM
KMJ 109	259	269	290	300	.562	.584	106	.018/.020	Modified High Torque 1/4 to 3/8mi 3200-7200 RPM
KMJ 110	255	265	291	301	.540	.557	106	.026/.028	IMCA Modified 11:1+ 377CID+ 3200-7200 RPM
KMJ 111	254	259	293	298	.552	.561	106	.018/.020	Modified / Stock Car 4BBL 3500-7200 RPM

DON'T FORGET THE CAM BREAK-IN OIL ADDITIVE!

1 bottle treats 5 quarts of oil. Use with first few oil changes to prevent premature wear during break-in period of flat-tappet hydraulic or solid lifter camshafts.

HOW 99000, HOWARDS MAX ZPM ZINC MOLY CAM BREAK-IN LUBE.....\$6.99



TIMING CHAIN SETS

SAG 73017-3 , SBC DOUBLE ROW TIMING CHAIN 3-KEYWAY	\$19.99
SAG 78100 , SBC TRU-DOUBLE ROLLER TIMING CHAIN 3-KEYWAY	\$32.99
SAG 78100T-9 , SBC TRU-DOUBLE ROLLER TIMING CHAIN 9-KEYWAY	\$46.00
SAG 78500T-9 , SBC BILLET ROLLER TIMING CHAIN 9-KEYWAY	\$69.99
SAG 78700 , SBC ADJUSTABLE BILLET ROLLER TIMING CHAIN.....	\$148.99
SAG 73128 , CHEVY 4.3L 5.7L LT1/FACTORY ROLLER OE STYLE TIMING CHAIN.....	\$50.99
SAG 73036-3 , BBC CHEVY HD DOUBLE ROW TIMING CHAIN 3-KEYWAY	\$30.50
SAG 78110 , BBC HP TRUE ROLLER TIMING CHAIN	\$39.99
SAG 78110T-9 , BBC HP TRUE ROLLER TIMING CHAIN 9-KEYWAY	\$59.99
SAG 78510T-9 , BBC BILLET TRUE ROLLER TIMING CHAIN 9-KEYWAY	\$77.00
SAG 73004-3 , SBF 302 351W DOUBLE ROW TIMING CHAIN 3-KEYWAY	\$25.00
SAG 73014-3 , SBF 302 351W DBL ROW TIMING CHAIN 3-KEYWAY.....	\$26.00
SAG 78120 , SBF 302 351W TRU-DBL RLR TIMING CHAIN 3KEYWAY	\$36.00
SAG 78151 , SBF 302 351W TRU-DBL RLR TIMING CHAIN 3KEYWAY	\$49.99
SAG 78151-9 , SBF 302 351W TRU-DBL RLR TIMING CHAIN 9KEYWAY	\$54.99
SAG 78121 , SBF 351C/M TRU-DBL ROLLER TIMING CHAIN	\$46.00
SAG 78130 , BBF 429 460 TRUE ROLLER TIMING CHAIN	\$46.00
SAG 73024-3 , SBM DOUBLE ROW TIMING CHAIN 3-KEYWAY.....	\$32.00
SAG 78103 , SBM DOUBLE ROLLER TIMING CHAIN 3-KEYWAY	\$44.00
SAG 78503-9 , SBM BILLET DOUBLE ROLLER TIMING CHAIN 9-KEYWAY.....	\$73.00
SAG 78104 , SBM DOUBLE ROW TIMING CHAIN 1-BOLT	\$44.00
SAG 78125 , SBM DOUBLE ROW TIMING CHAIN 3-BOLT.....	\$44.00
SAG 78504-9 , SBM BILLET ROLLER TIMING CHAIN 1-BOLT	\$73.00
SAG 78525T9 , SBM BILLET ROLLER TIMING CHAIN 3-BOLT.....	\$77.00

TIMING CHAIN FASTENERS AND ACCESSORIES

MOR 38590 , SBC TIMING COVER BOLTS SET	\$4.99
KMJ 23400 , SBC/BBC CAMSHAFT LOCKING PLATE AND BOLTS	\$4.99
KMJ 23450 , SBC SHORT CAM BUTTON	\$3.00
KMJ 23495 , SBC LONG CAM BUTTON.....	\$3.00
KMJ 23400+23450 , SBC CAM LOCKING PLATE & SHORT CAM BUTTON.....	\$7.99
KMJ 23400+23495 , SBC CAM LOCKING PLATE & LONG CAM BUTTON	\$7.99
PCE PC3991 , SMALL BLOCK CHEVY CRANKSHAFT TURNING SOCKET	\$15.99
PCE PC3992 , BIG BLOCK CHEVY CRANKSHAFT TURNING SOCKET	\$15.99
PCE PC3993 , SMALL BLOCK FORD CRANKSHAFT TURNING SOCKET	\$15.99



STUD GIRDLES

PCE PC2351 , SBC STUD GIRDLE ALUMINUM 3/8.....	\$49.99
PCE PC2352 , SBC STUD GIRDLE ALUMINUM 7/16	\$49.99
PCE PC2354 , SBF 302 STUD GIRDLE ALUMINUM 3/8	\$59.99
PCE PC2355 , SBF 302 STUD GIRDLE ALUMINUM 7/16	\$59.99
ARC ASG-C-38 , SBC ALUM STUD GIRDLE 3/8 SPRING LOADED.....	\$59.99
ARC ASG-C-716 , SBC ALUM STUD GIRDLE 7/16 SPRING LOADED.....	\$59.99



CAMSHAFT BEARINGS

DUR CH-8 , SMALL BLOCK CHEVY STD.....	\$14.99
DUR CHP-8 , SMALL BLOCK CHEVY HP	\$28.99
DUR CH-12 , BIG BLOCK CHEVY STD.....	\$17.99
DUR F-18 , FORD 351W STD	\$14.99
DUR PD-16 , SMALL BLOCK MOPAR STD	\$25.99
DUR PD-17 , BIG BLOCK MOPAR STD	\$17.99



TIMING CHAIN COVERS

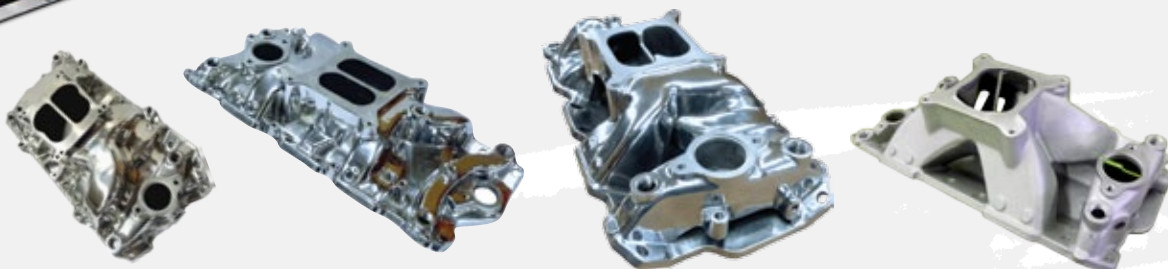
RPCS4932R , SBC RAW STEEL TIMING CHAIN COVER	\$6.99
RPCS4932 , SBC CHROME STEEL TIMING CHAIN COVER	\$9.99
RPCS7122 , SBC 2-PIECE TIMING CHAIN COVER CHROME	\$19.99
RPCS4960 , SBC CHROME TIMING COVER TAB 6.75 7 8	\$3.99
RPCS6040 , SBC TIMING CHAIN COVER POL ALUMINUM	\$23.99
RPCS6040BOX , SBC POLISHED ALUMINUM W/GASKETS, SEAL, BOLTS KIT	\$29.99
RPCS6041 , SBC TIMING TAB POINTER POL ALUM 6-7IN	\$18.50
KMJ TCSS124-1 , SBC TIMING COVER GASKET	\$2.99
FEL 16202 , FEL-PRO SBC TIMING COVER FRONT SEAL	\$6.99
RPCS4935 , BBC TIMING CHAIN COVER NO TAB	\$9.99
RPCS4961 , BBC CHROME TIMING TAB BIN	\$4.99
RPCS8422BOX , BBC POLISHED ALUMINUM W/GASKETS, SEAL, BOLTS KIT	\$29.99

Or Call us at: 515-733-2890



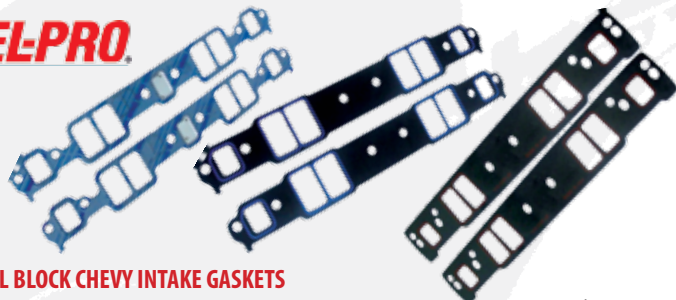


INTAKE MANIFOLDS AND ACCESSORIES



	Low Rise Idle-5500RPM Satin Finish	Low Rise Idle-5500RPM Polished Finish	Medium Rise 1500-6500RPM Satin Finish	Medium Rise 1500-6500RPM Polished Finish	Air Gap 1500-6500RPM Satin Finish	Air Gap 1500-6500RPM Polished Finish	Hurricane 3000-7500RPM Satin Finish	Hurricane 3000-7500RPM Polished Finish	Super Hurricane 3000-7500+RPM Satin Finish	Super Hurricane 3000-7500+RPM Polished Finish
SBC 1955-1995	PCE PC2001 \$109.99	PCE PC2000 \$139.99	PCE PC2013 \$119.99	PCE PC2012 \$139.99	PCE PC2026 \$123.99	PCE PC2025 \$179.99	PCE PC2031N \$119.99	PCE PC2030 \$169.99	PCE PC2037 \$179.99	PCE PC2036 \$199.99
SBC 1996-1999 Vortec	PCE PC2007 \$119.99	PCE PC2006 \$139.99	N/A	N/A	PCE PC2028 \$159.99	PCE PC2027 \$179.99	PCE PC2033 \$159.99	PCE PC2032 \$159.99	N/A	N/A
BBC Oval Port	PCE PC3000 \$169.99	PCE PC3001 \$129.99	N/A	N/A	PCE PC3026 \$219.99	PCE PC3025 \$239.99	N/A	PCE PC3036 \$219.99	N/A	N/A
BBC Rectangle Port	N/A	N/A	N/A	N/A	N/A	N/A	PCE PC3031 \$189.99	PCE PC3030 \$169.99	N/A	PCE PC3032 \$239.99
SMALL BLOCK FORD 289 302	PCE PC4001 \$129.99	PCE PC4000 \$149.99	N/A	N/A	PCE PC4026 \$149.99	N/A	PCE PC4031 \$169.99	PCE PC4030 \$199.99	N/A	N/A
SMALL BLOCK FORD 351W	N/A	PCE PC4023 \$159.99	N/A	N/A	N/A	N/A	PCE PC4033 \$179.99	PCE PC4032 \$209.99	N/A	N/A
SMALL BLOCK MOPAR 318 340 360	N/A	N/A	N/A	N/A	PCE PC5026 \$169.99	PCE PC5025 \$199.99	N/A	N/A	N/A	N/A

FELPRO



SMALL BLOCK CHEVY INTAKE GASKETS

FEL 1204, SBC STOCK INTAKE GASKET PAIR.....	\$14.99
FEL 1205, SBC SMALL RACE 1.28X2.09 .060 PAIR.....	\$15.99
FEL 1206, SBC MED RACE 1.34X2.21 .060 PAIR.....	\$15.99
KMJ 1255, SBC VORTEC SMALL RACE .060 PAIR.....	\$15.99

MOROSO



INTAKE MANIFOLD BOLTS

MOR 38400, SBC / 90° V6 / CHRYSLER SMALL BLOCK GOLD IRIDIUM INTAKE BOLT SET.....	\$14.25
MOR 38410, BBC 454 WITH TUNNEL RAM/DUAL PLANE INTAKE BOLT SET.....	\$19.02
MOR 38420, BBC 454 WITH SINGLE PLANE INTAKE BOLT SET.....	\$22.07



WATER OUTLETS

RPC S9468, SBC/BBC CHROME WATER NECK W/1/2" NPT PORT.....	\$10.50
RPC S6009, SBC/BBC 90° ALUM SWVL WATER NECK.....	\$12.99
RPC S6003, SBC/BBC 40° ALUM SWVL WATER NECK.....	\$14.99
MOR 63420, SBC/BBC MANIFOLD FILLER NECK W/PORTS.....	\$62.40
RPC S4987, CHRYSLER 1964+ STRAIGHT WATER NECK CHROME.....	\$9.99

MOROSO



DISTRIBUTOR HOLD-DOWN CLAMP

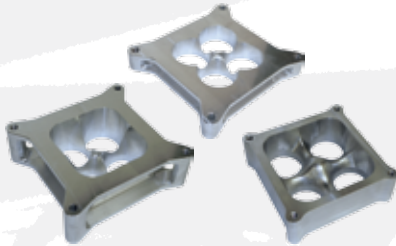
MOR 26200, SBC/BBC / 90° V6 DISTRIBUTOR HOLD DOWN.....	\$10.50
MOR 26211, SMALL BLOCK FORD DISTRIBUTOR HOLD DOWN.....	\$12.25

CARBURETORS, SPACERS, AND FUEL PUMPS



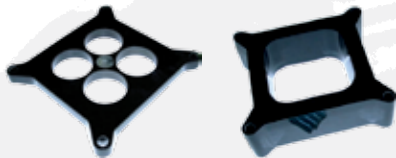
CARBURETORS AND CARB ACCESSORIES

JET 37001, ROCHESTER 2G 500CFM 2BBL HOBBY-STOCK RACE CARB.....	\$239.99
HOL 37-1543, HOLLEY 2300 2BBL REBUILD KIT	\$23.00
HOL 37-485, HOLLEY 4150 4160 4BBL REBUILD KIT	\$42.00
HOL 108-83-2, HOLLEY BLUE REUSABLE FUEL BOWL GASKETS.....	\$8.00
HOL 108-89-2, HOLLEY BLUE REUSABLE METERING BLOCK GASKETS	\$8.00
RPC S2046, 1 3/8" CARB STUD KIT.....	\$1.95
RPC S2047, 2" CARB STUD KIT.....	\$1.95



ALUMINUM CARB SPACERS

PCE PC3242, 1" 4BBL 4150 PORTED ALUMINUM CARB SPACER.....	\$55.00
PCE PC3243, 2" 4BBL 4150 PORTED ALUMINUM CARB SPACER.....	\$69.00
PCE PC3248, 2" 4BBL 4500 DOMINATOR PORTED ALUMINUM CARB SPACER.....	\$75.83
RPC S2103, 1" 4BBL 4150 OPEN CARB SPACER & STUDS	\$19.99
RPC S2081, 2" 4BBL 4150 OPEN CARB SPACER W/STUDS & GASKETS.....	\$19.99
RPC S2067, 4BBL SQUARE BORE 4150 TO QUADRAJET INTAKE ADAPTER.....	\$21.99

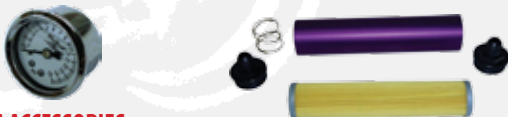


PHENOLIC CARB SPACERS

RPC S9139, 1/2" 4BBL 4150 OPEN PHENOLIC CARB SPACER & STUDS	\$13.75
RPC S9138, 1/2" 4BBL 4150 4-HOLE PHENOLIC CARB SPACER & STUDS	\$13.50
RPC S9136, 1" 4BBL 4150 OPEN PHENOLIC CARB SPACER & STUDS.....	\$14.00
RPC S9135, 2" 4BBL 4150 4-HOLE PHENOLIC CARB SPACER & STUDS	\$15.50
RPC S9137, 2" 4BBL 4150 OPEN PHENOLIC CARB SPACER & STUDS.....	\$15.00

CARB BASE GASKETS

RPC S2033, 4BBL 4150 SQUARE BORE 4-HOLE	\$2.99
RPC S2069, 4BBL 4150 SQUARE BORE OPEN	\$2.99



FUEL SYSTEM ACCESSORIES

MOR 65750, SBC LIGHTWEIGHT FUEL PUMP PUSHROD.....	\$20.50
RPC S5715, 15PSI 1.5INCH FUEL PRESSURE GAUGE.....	\$9.99
HOL 26-500, HOLLEY 15PSI CHROME FUEL PRESSURE GAUGE	\$28.99
HOL 26-504, HOLLEY 15PSI LIQUID FILLED FUEL PRESSURE GAUGE.....	\$56.99
KMJ 910-11741, HI-FLOW FUEL FILTER 10" PAPER ELEMENT.....	\$39.99
KMJ 910-11745, HI-FLOW FUEL FILTER 10" STAINLESS ELEMENT.....	\$69.99

MECHANICAL FUEL PUMPS

KMJ JM1003C, SBC CHROME MECHANICAL FUEL PUMP.....	\$32.50
KMJ JM1004C, BBC CHROME MECHANICAL FUEL PUMP	\$32.50
KMJ JM1005C, CHRYSLER 318 CHROME MECHANICAL FUEL PUMP	\$79.99
KMJ JM1006C, CHRYSLER 440 CHROME MECHANICAL FUEL PUMP	\$79.99
KMJ JM1007C, FORD 302/351W CHROME MECH FUEL PUMP.....	\$32.50
KMJ JM1008C, FORD 390/427 CHROME MECH FUEL PUMP	\$32.50
KMJ JM1009C, FORD 351C/M CHROME MECH FUEL PUMP.....	\$32.50
KMJ JM1010C, FORD BIG BLOCK 429/460 CHROME MECH FUEL PUMP.....	\$32.50
KMJ JM1011C, OLDS V8 CHROME MECHANICAL FUEL PUMP	\$32.50
KMJ JM1012C, PONTIAC V8 CHROME MECHANICAL FUEL PUMP.....	\$32.50



ELECTRIC FUEL PUMPS

RPC S6253, 100GPH ELECTRIC FUEL PUMP.....	\$40.00
RPC S6253C, 100 GPH CHROME ELECTRIC FUEL PUMP	\$46.67
RPC S6254, 120GPH ELECTRIC FUEL PUMP.....	\$40.00
RPC S6254C, 120GPH CHROME ELECTRIC FUEL PUMP	\$46.67
RPC S6256, 140GPH ELECTRIC FUEL PUMP.....	\$40.00
RPC S6256C, 140GPH CHROME ELECTRIC FUEL PUMP	\$46.67
RPC S2057, SBC CHROME FUEL PUMP BLOCK-OFF PLATE.....	\$2.99
RPC S2057X, SBC DIE-CAST BALL-MILLED FUEL PUMP BLOCK-OFF PLATE.....	\$3.95

FUEL PRESSURE REGULATORS

PCE PC2851, CHROME FUEL PUESSURE REGULATOR.....	\$17.50
PCE PC2852D, RED ANODIZED FUEL PRESSURE REGULATOR.....	\$23.50
PCE PC2852E, BLUE ANODIZED FUEL PRESSURE REGULATOR.....	\$23.50
PCE PC2852K, BLACK ANODIZED FUEL PRESSURE REGULATOR	\$23.50



FUEL LINE / CARB ACCESSORIES

RPC S2157, ALUMINUM 4150 DUAL FEED FUEL LOG.....	\$44.99
RPC S2158, RED ANODIZED 4150 DUAL FEED FUEL LOG.....	\$44.99
PCE PC3244D, RED ANODIZED 4150 THROTTLE CABLE BRACKET.....	\$35.99
PCE PC3244E, BLUE ANODIZED 4150 THROTTLE CABLE BRACKET.....	\$35.99
PCE PC3244P, POLISHED ALUMINUM 4150 THROTTLE CABLE BRACKET.....	\$29.99
RPC S2083, HOLLEY CARB THROTTLE RETURN SPRING KIT.....	\$9.99



HOLLEY JET KITS

HOL 36-181, GAS JET KIT 64-99	\$53.75
HOL 36-201, ALCOHOL JET KIT 132-200	\$94.25



Or Call us at: 515-733-2890





GAUGE AND SWITCH PANELS

QUICKCAR SWITCH PANELS



QUI 50-053, SINGLE SWITCH W/ GUARD / PUSH START W/ LIGHT\$39.95



QUI 50-022, 2 SWITCHES W/ LIGHTS / PUSH START\$48.95



BATTERY/STARTER WIRING AND ACCESSORIES

- QUI 50-430, REMOTE STARTER SOLENOID\$19.95
- QUI 55-012, MASTER BATTERY DISCONNECT 4 POST\$31.95
- QUI 57-009, 15' BATTERY CABLE KIT\$46.95
- QUI 57-012, 25' DUAL MOUNT BATTERY CABLE KIT\$99.95
- QUI 50-201, 5' HEI IGNITION WIRING HARNESS\$19.95
- QUI 50-230, STREET-STOCK CAR IGNITION WIRING KIT\$149.95

QUICKCAR GAUGE PANELS



QUI 61-6001, OIL PRESSURE / WATER TEMP W/LIGHTS\$113.95



QUI 61-6031, OIL PRES / WATER TEMP / 10K RPM TACH W/ RECALL W/ LIGHTS\$279.95



QUI 61-6042, OIL PRES / WATER TEMP / FUEL PRESS / 10K RPM TACH W/ RECALL & LIGHTS\$319.95



QUI 61-6012, OIL PRESSURE / WATER TEMP / FUEL PRESSURE W/LIGHTS\$171.95

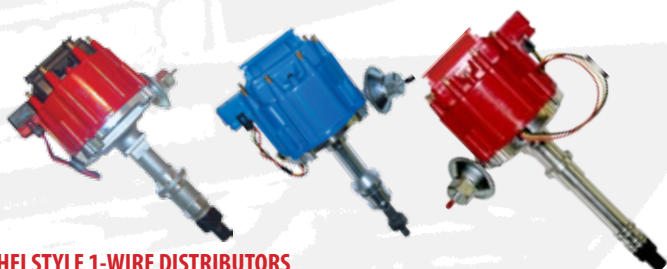


QUI 61-0601, ULTRA-NITE OIL PRESSURE / WATER TEMP\$219.95



KMJ PERFORMANCE HI-TORQUE MINI STARTERS

KMJ JM7001R, SBC/BBC 153/168 TOOTH STRAIGHT BOLT HI-TORQUE MINI-STARTER RED	\$79.99
KMJ JM7001BK, SBC/BBC 153/168 TOOTH STRAIGHT BOLT HI-TORQUE MINI-STARTER BLACK.....	\$79.99
KMJ JM7001C, SBC/BBC 153/168 TOOTH STRAIGHT BOLT HI-TORQUE MINI-STARTER CHROME.....	\$89.99
PCE PC2104, SBC/BBC 168 TOOTH ANGLE BOLT HI-TORQUE MINI-STARTER.....	\$69.99
PCE PC2103, SBC/BBC 153 TOOTH STRAIGHT BOLT HI-TORQUE MINI-STARTER.....	\$69.99



HEI STYLE 1-WIRE DISTRIBUTORS

KMJ PE322R, 50KV HEI STOCK APPEARING RED CAP	\$49.99
RPC S3915, 65KV HEI ACCEL-TYPE SUPER COIL RED CAP	\$49.99
RPC S3915C, 65KV HEI ACCEL-TYPE SUPER COIL CLEAR CAP/ROTOR.....	\$49.99
PCE PC6002E, 50KV HEI SMALL BLOCK FORD 289/302 BLUE CAP	\$79.99
PCE PC6003E, 50KV HEI FORD 351W BLUE CAP	\$79.99
PCE PC6004E, 50KV BIG BLOCK FORD 351/400/429/460 BLUE CAP.....	\$79.99
PCE PC6008, 50KV PONTIAC V8 RED CAP.....	\$79.99
PCE PC6009E, 50KV OLDSMOBILE V8 RED CAP	\$79.99



IGNITION COMPONENTS

PCE PC2041, 65KV SUPER COIL (AVAILABLE IN RED, BLUE, BLACK)	\$29.99
MOR 72300, HEI ADVANCE CURVE WEIGHT KIT.....	\$8.99
PCE PC2015, 6AL MULTI-SPARK BOX WITH SOFT-REV CONTROL.....	\$99.99

SBC BRONZE DISTRIBUTOR GEARS

KMJ DG350B, CHEVY SBC/BBC BRONZE DISTRIBUTOR GEAR FOR .491 (OE-HEI) SHAFT	\$16.00
KMJ DG350A, CHEVY SBC/BBC BRONZE DISTRIBUTOR GEAR FOR .500 (MSD) SHAFT.....	\$16.00

SMALL BLOCK FORD BRONZE DISTRIBUTOR GEARS

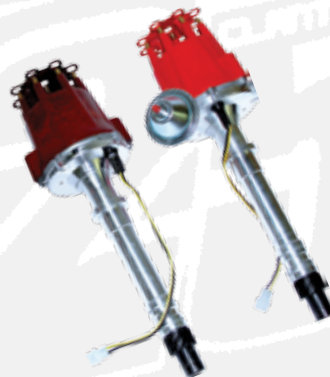
KMJ DG302B, FORD 302/351 BRONZE DISTRIBUTOR GEAR FOR STOCK SHAFT	\$16.00
KMJ DG302A, FORD 302/351 BRONZE DISTRIBUTOR GEAR FOR .500 SHAFT	\$16.00



MOROSO MAG-TUNE PLUG WIRE SETS

MOR 9881M, UNIVERSAL MAG-TUNE WIRE SET UNSLEEVED STRAIGHT PLUG BOOTS	\$24.99
MOR 9880M, UNIVERSAL MAG-TUNE WIRE SET UNSLEEVED 90° PLUG BOOTS	\$24.99
MOR 9882M, UNIVERSAL MAG-TUNE WIRE SET UNSLEEVED 135° PLUG BOOTS	\$24.99
MOR 9862M, UNSLEEVED SBC OVER 90° PLUG HEI.....	\$27.99
MOR 9860M, UNSLEEVED SBC OVER 90° PLUG NON-HEI	\$27.99
MOR 9865M, UNSLEEVED SBC UNDER 90° PLUG NON-HEI	\$27.99
MOR 9867M, UNSLEEVED SBC UNDER 90° PLUG HEI	\$27.99
MOR 9762M, SLEEVED SBC OVER 90° PLUG HEI.....	\$79.99
MOR 9760M, SLEEVED SBC OVER 90° PLUG NON-HEI.....	\$79.99
MOR 9765M, SLEEVED SBC UNDER 90° PLUG NON-HEI.....	\$79.99
MOR 9767M, SLEEVED SBC UNDER HEI.....	\$79.99

We have many more wire sets to choose from, including direct fit for your application. Visit us online at WWW.KMJENT.COM to view our entire selection.



SMALL / BIG BLOCK CHEVY PRO-BILLET ELECTRONIC DISTRIBUTOR

Distributor requires external coil and box such as our PCE PC2015

PCE PC8001MECH, MECHANICAL ADVANCE ONLY.....	\$79.99
PCE PC8001VAC, VACUUM & MECHANICAL ADVANCE.....	\$79.99



KMJ PERFORMANCE IGNITION KIT

Kit includes 8000 Series Pro-Billet distributor, 6AL multi-spark ignition box with soft-rev control, 65KV super-coil.

KMJ PIK-V, IGNITION KIT W/VACUUM ADVANCE	\$199.99
KMJ PIK-M, IGNITION KIT MECHANICAL ADVANCE ONLY	\$199.99

See page 12 for Distributor hold-down clamps.



COOLING AND ACCESSORIES

ALUMINUM RACE-PRO RADIATORS

- Up to 24% improvement in heat transfer over other brand's of racing radiators!
- Epoxy free construction - Nothing to crack, chip or leak!
- Extra heavy reinforced die-stamped tanks for added rigidity.
- Billet machined filler neck for better pressure control.
- Highly louvered cooling fins exclusively designed for high performance heat dissipation.
- All welded construction - No Gaskets!
- Also available with high-performance aluminum 7 plate engine oil cooler.
- 2 rows of 1" high capacity cooling tubes.
- Heavy wall inlet & outlet fittings for secure hose connection.
- Designed to cool racing engines.



GM STYLE SINGLE-PASS ALUMINUM RADIATORS

INLET: UPPER DRIVERS SIDE 1½" / OUTLET: LOWER PASS. SIDE 1¾"

NOR 209674, 19X22 OVERALL; 18X16 CORE.....	\$129.99
NOR 209642, 19X24 OVERALL; 18X18 CORE.....	\$129.99
NOR 209675, 19X26 OVERALL; 18X20 CORE.....	\$129.99
NOR 209676, 19X28 OVERALL; 18X22 CORE.....	\$129.99
NOR 209677, 19X31 OVERALL; 18X26 CORE.....	\$129.99

GM STYLE DOUBLE-PASS ALUMINUM RADIATORS

INLET: UPPER PASS. SIDE 1½" / OUTLET: LOWER PASS. SIDE 1¾"

NOR 209633, 19X24 OVERALL; 18X18 CORE.....	\$169.99
NOR 209635, 19X26 OVERALL; 18X20 CORE.....	\$169.99
NOR 209624, 19X28 OVERALL; 18X22 CORE.....	\$169.99
NOR 209626, 19X31 OVERALL; 18X26 CORE.....	\$169.99

GM STYLE TRIPLE-PASS ALUMINUM RADIATORS

INLET: UPPER DRIVERS SIDE 1½" / OUTLET: LOWER PASS. SIDE 1¾"

NOR 209689, 19X24 OVERALL; 18X18 CORE.....	\$199.99
NOR 209690, 19X26 OVERALL; 18X20 CORE.....	\$199.99
NOR 209691, 19X28 OVERALL; 18X22 CORE.....	\$199.99
NOR 209692, 19X31 OVERALL; 18X26 CORE.....	\$199.99

FORD/MOPAR STYLE SINGLE-PASS ALUMINUM RADIATORS

INLET: UPPER PASS. SIDE 1½" / OUTLET: LOWER DRIVERS SIDE 1¾"

NOR 209670, 19X22 OVERALL; 18X16 CORE.....	\$129.99
NOR 209643, 19X24 OVERALL; 18X18 CORE.....	\$129.99
NOR 209671, 19X26 OVERALL; 18X20 CORE.....	\$129.99
NOR 209672, 19X28 OVERALL; 18X22 CORE.....	\$129.99
NOR 209673, 19X31 OVERALL; 18X26 CORE.....	\$129.99

FORD/MOPAR STYLE DOUBLE-PASS ALUMINUM RADIATORS

INLET: UPPER DRIVERS SIDE 1½" / OUTLET: LOWER DRIVERS SIDE 1¾"

NOR 209634, 19X24 OVERALL; 18X18 CORE.....	\$169.99
NOR 209636, 19X26 OVERALL; 18X20 CORE.....	\$169.99
NOR 209625, 19X28 OVERALL; 18X22 CORE.....	\$169.99
NOR 209627, 19X31 OVERALL; 18X26 CORE.....	\$169.99

FORD/MOPAR STYLE TRIPLE-PASS ALUMINUM RADIATORS

INLET: UPPER PASS. SIDE 1½" / OUTLET: LOWER DRIVERS SIDE 1¾"

NOR 209694, 19X24 OVERALL; 18X18 CORE.....	\$199.99
NOR 209695, 19X26 OVERALL; 18X20 CORE.....	\$199.99
NOR 209696, 19X28 OVERALL; 18X22 CORE.....	\$199.99
NOR 209697, 19X31 OVERALL; 18X26 CORE.....	\$199.99

MECHANICAL WATER PUMPS

KMJ 63500CT, SBC CIRCLE-TRACK SHORT ALUMINUM.....	\$79.00
PCE PC2901, SBC SHORT HV ALUMINUM.....	\$49.99
PCE PC2902, SBC LONG HV ALUMINUM.....	\$59.99



25% REDUCTION MATCHED PULLEY SETS FOR SMALL BLOCK CHEVY

KMJ 910-15460, MATCHED ALUMINUM PULLEY SET SHORT WATER PUMP.....	\$64.95
KMJ 910-15461, MATCHED ALUMINUM PULLEY SET LONG WATER PUMP.....	\$74.95



FANS, SHROUDS, SPACERS

SMI 80191, 1.5 INCH FAN SPACER.....	\$22.50
SMI 80192, 2 INCH FAN SPACER.....	\$25.00
SMI 80193, 2.5 INCH FAN SPACER.....	\$24.50
SMI 80194, 3 INCH FAN SPACER.....	\$25.95



RADIATOR CAPS

KMJ 15622, RACING RADIATOR CAP 22-24LBS.....	\$9.95
KMJ 15628, RACING RADIATOR CAP 28-32LBS.....	\$9.95



ELECTRIC FANS, MOUNTING KITS, RELAYS

RPC S1200, 10" STRAIGHT BLADE ELECTRIC FAN.....	\$19.99
PCE PC2051S, 10" CURVED BLADE REVERSIBLE ELECTRIC FAN.....	\$19.99
RPC S1202, 12" STRAIGHT BLADE ELECTRIC FAN.....	\$22.99
PCE PC2052S, 12" CURVED BLADE REVERSIBLE ELECTRIC FAN.....	\$22.99
RPC S1204, 14" STRAIGHT BLADE ELECTRIC FAN.....	\$29.99
PCE PC2053S, 14" CURVED BLADE REVERSIBLE ELECTRIC FAN.....	\$29.99
RPC S1206, 16" STRAIGHT BLADE ELECTRIC FAN.....	\$34.99
PCE PC2054S, 16" CURVED BLADE REVERSIBLE ELECTRIC FAN.....	\$34.99
RPC S1019, ELECTRIC FAN MOUNTING KIT.....	\$3.25
RPC S1018, 30A ELECTRONIC RELAY.....	\$9.99



CHROME ELECTRIC FANS

RPC S1201, 10" CURVED BLADE CHROME ELECTRIC FAN.....	\$29.99
RPC S1203, 12" CURVED BLADE CHROME ELECTRIC FAN.....	\$29.99
RPC S1205, 14" CURVED BLADE CHROME ELECTRIC FAN.....	\$39.99
RPC S1207, 16" CURVED BLADE CHROME ELECTRIC FAN.....	\$49.99



3000 SERIES STAINLESS RACE HOSE



500-1500 PSI Working Pressure covers all of the oil, water, and fuel systems you may encounter. Two layers of rugged woven stainless steel. Inner layer resists collapse and the outer layer protects against abrasion.

Unique CPFE inner liner is compatible with all hydrocarbon and alcohol based fuels, along with synthetic and natural based lubricants.

20 FOOT ROLLS

FRA 720004, AN -4 7/32" NOMINAL ID 20 FEET.....	\$118.08
FRA 720006, AN -6 11/32" NOMINAL ID 20 FEET.....	\$132.69
FRA 720008, AN -8 7/16" NOMINAL ID 20 FEET.....	\$157.03
FRA 720010, AN -10 9/16" NOMINAL ID 20 FEET.....	\$181.37
FRA 720012, AN -12 11/16" NOMINAL ID 20 FEET.....	\$205.74
FRA 720016, AN -16 7/8" NOMINAL ID 20 FEET.....	\$258.07
FRA 720020, AN -20 1 1/8" NOMINAL ID 20 FEET.....	\$339.83

PER FOOT

FRA 700004, AN -4 7/32" NOMINAL ID 1 FT.....	\$8.87
FRA 700006, AN -6 11/32" NOMINAL ID 1 FT.....	\$9.96
FRA 700008, AN -8 7/16" NOMINAL ID 1 FT.....	\$11.79
FRA 700010, AN -10 9/16" NOMINAL ID 1 FT.....	\$13.60
FRA 700012, AN -12 11/16" NOMINAL ID 1 FT.....	\$15.43
FRA 700016, AN -16 7/8" NOMINAL ID 1 FT.....	\$19.36
FRA 700020, AN -20 1 1/8" NOMINAL ID 1 FT.....	\$25.48

2000 Series Pro-Flow Hose Ends

	Straight		30 °		45 °		60 °	
	Blue	Black	Blue	Black	Blue	Black	Blue	Black
-4	220104 \$5.73	220104-BL \$5.73	223004 \$16.34	223004-BL \$16.34	224504 \$14.91	224504-BL \$14.91	226004 \$16.20	226004-BL \$16.20
-6	220106 \$6.31	220106-BL \$6.31	223006 \$17.29	223006-BL \$17.29	224506 \$15.89	2204506-BL \$15.89	226006 \$17.35	226006-BL \$17.35
-8	220108 \$7.40	220108-BL \$7.40	223008 \$20.65	223008-BL \$20.65	224508 \$19.14	2204508-BL \$19.14	226008 \$20.68	226008-BL \$20.68
-10	220110 \$9.79	220110-BL \$9.79	223010 \$24.23	223010-BL \$24.23	2204510 \$22.27	2204510-BL \$22.27	226010 \$25.08	226010-BL \$25.08
-12	220112 \$14.40	220112-BL \$14.40			2204512 \$28.00	2204512-BL \$28.00		
-16	220116 \$20.95	220116-BL \$20.95			2204516 \$35.36	2204516-BL \$35.36		
	90 °		120 °		180 °			
	Blue	Black	Blue	Black	Blue	Black		
-4	229004 \$14.82	229004-BL \$14.82	231204 \$22.27	231204-BL \$22.27	231804 \$22.27	231804-BL \$22.27		
-6	229006 \$15.83	229006-BL \$15.83	231206 \$23.82	231206-BL \$23.82	231806 \$23.82	231806-BL \$23.82		
-8	229008 \$19.18	229008-BL \$19.18	231208 \$24.49	231208-BL \$24.49	231808 \$24.49	231808-BL \$24.49		
-10	229010 \$22.45	229010-BL \$22.45	231210 \$26.92	231210-BL \$26.92	231810 \$26.92	231810-BL \$26.92		
-12	229012 \$28.37	229012-BL \$28.37	231212 \$30.50	231212-BL \$30.50				
-16	229016 \$35.69	229016-BL \$35.69						



8600 SERIES PARKER PUSH-LOK BLUE HOSE



Fragola Series 8600 Parker Push-Lok General Purpose Blue Hose is the performance standard for a multitude of applications. It is manufactured to the same rigorous standards of all of Parker's products. 250psi max pressure allows use with most oil, water, and fuel applications.

This works well with Fragola's Push-Lock Hose ends.

20 FOOT ROLL

FRA 862004, AN -4 1/4" NOMINAL ID 20FT	\$48.83
FRA 862006, AN -6 3/8" NOMINAL ID 20FT	\$58.56
FRA 862008, AN -8 1/2" NOMINAL ID 20FT	\$68.27
FRA 862010, AN -10 5/8" NOMINAL ID 20FT	\$93.92

PER FOOT

FRA 860004, AN -4 1/4" NOMINAL ID 1FT	\$2.91
FRA 860006, AN -6 3/8" NOMINAL ID 1FT	\$3.48
FRA 860008, AN -8 1/2" NOMINAL ID 1FT	\$4.06
FRA 860010, AN -10 5/8" NOMINAL ID 1FT	\$5.62
FRA 860012, AN -12 3/4" NOMINAL ID 1FT	\$7.00
FRA 860016, AN -16 1" NOMINAL ID 1FT	\$8.75

8000 SERIES PUSH-LITE RACE HOSE



Demanding the best requires Fragola Series 8000 Push-Lite race hose.

Fragola Performance Systems takes hose just as seriously as it takes hose ends. Series 8000 Push-Lite race hose is manufactured to the highest aerospace-quality standards for years of trouble-free service, even under high pressure. The difference is the lighter weight of an inner layer of synthetic rubber reinforced with fiber braid and wrapped with a weather-resistant textile cover. Series 8000 Push-Lite race hose from Fragola has a 250 psi maximum working pressure that is compatible with most automotive water, oil, and fuel systems, making Push-Lite hose an ideal alternative when considering cost or weight. Fragola Series 8000 Push-Lite race hose is made in the USA in assorted sizes and lengths to perfectly fit your application.

8000 Series Push-Lite may be used in any number of automotive applications. If you are using fittings other than our 8000 Series Push-Lite Hose Ends, be sure to measure the hose barb diameter to determine the suitability. This hose is sized fractionally, but the suitability is at the sole determination of the end user.

20 FOOT ROLL

FRA 862006, AN -6 3/8" NOMINAL ID 20FT	\$58.56
FRA 862008, AN -8 1/2" NOMINAL ID 20FT	\$68.27
FRA 862010, AN -10 5/8" NOMINAL ID 20FT	\$93.92

PER FOOT

FRA 800006, AN -6 3/8" NOMINAL ID 1FT	\$5.21
FRA 860008, AN -8 1/2" NOMINAL ID 1FT	\$6.16
FRA 860010, AN -10 5/8" NOMINAL ID 1FT	\$7.10

PUSH-LOCK / PUSH LITE CLAMPS AND PLIERS



The right tool for the job!

Fragola Performance Systems clamp pliers allow for the easy installation of push lock clamps. Simply squeeze the special crimping pliers around the clamp for added protection on any push-on hose assembly. It's no secret that having the right tool means the difference between spending a grueling half-day on a job and breezing through it.

Fragola clamp pliers are essential items for your toolbox.

FRA 999150	Clamp Pliers	\$54.29
FRA 999154	-4 HOSE CLAMPS PAIR	\$1.41
FRA 999156	-6 HOSE CLAMPS PAIR	\$1.41
FRA 999158	-8 HOSE CLAMPS PAIR	\$1.48
FRA 999160	-10 HOSE CLAMPS PAIR	\$1.48
FRA 999162	-12 HOSE CLAMPS PAIR	\$1.71

SERIES 8000 Push-Lock Hose Ends



These Fragola Performance Systems Series 8000 Push-Lite race hose ends feature a unique one-piece design that eliminates two brazed joints, minimizing potential leakage and improving flow and appearance. The correct AN specified J-thread is used for ease of installation and trouble-free re-use. A lightweight polymer cap provides positive stop for hose installation and covers the cut end of the hose. Hose barb dimensions are per SAE standards and they have a tapered nipple for easy alignment and installation. Their bright-dip anodizing provides a show-quality finish. Fragola Performance Systems Series 8000 Push-Lite hose ends are manufactured from aerospace-quality aluminum and machined to mil spec tolerances.



STRAIGHT

	Blue	Black
-4	200104 \$3.60	20104-BL \$3.60
-6	200106 \$3.65	200106-BL \$3.65
-8	200108 \$4.61	200108-BL \$4.61
-10	200110 \$6.09	200110-BL \$6.09
-12	200112 \$10.79	200112-BL \$10.79
-16	200116 \$15.87	200116-BL \$15.87



30°

	Blue	Black
-6	203006 \$15.78	203006-BL \$15.78
-8	203008 \$19.46	203008-BL \$19.46
-10	203010 \$22.98	203010-BL \$22.98



45°

	Blue	Black
-6	204506 \$15.78	204506-BL \$15.78
-8	204508 \$19.46	204508-BL \$19.46
-10	204510 \$22.98	204510-BL \$22.98
-12	204512 \$25.68	204512-BL \$25.68
-16	204516 \$33.57	204516-BL \$33.57



60°

	Blue	Black
-6	206006 \$15.78	206006-BL \$15.78
-8	206008 \$19.46	206008-BL \$19.46
-10	206010 \$22.98	206010-BL \$22.98



90°

	Blue	Black
-6	209006 \$15.56	209006-BL \$15.56
-8	209008 \$19.46	209008-BL \$19.46
-10	209010 \$22.98	209010-BL \$22.98
-12	209012 \$25.68	209012-BL \$25.68
-16	209016 \$33.57	209016-BL \$33.57



120°

	Blue	Black
-6	212006 \$17.55	212006-BL \$17.55
-8	212008 \$21.63	212008-BL \$21.63
-10	212010 \$25.52	212010-BL \$25.52



150°

	Blue	Black
-6	215006 \$17.55	215006-BL \$17.55
-8	215008 \$21.63	215008-BL \$21.63
-10	215010 \$25.52	215010-BL \$25.52



180°

	Blue	Black
-6	218006 \$17.55	218006-BL \$17.55
-8	218008 \$21.63	218008-BL \$21.63
-10	218010 \$25.52	218010-BL \$25.52



Be sure to check out our entire line of fittings and hoses at WWW.KMJENT.COM!

Or Call us at: 515-733-2890





ALUMINUM FITTINGS AND ADAPTERS

Fragola Aluminum A-N Adapters and Fittings may look like simple devices, but Fragola takes them very seriously. They have spent several years researching, testing, and retesting to perfect what they feel are the finest adapters and fittings available.

STRAIGHT



BLUE PART #	BLACK PART #	AN SIZE	NPT SIZE	PRICE
481601	N/A	-3	1/16"	1.93
481603	481603-BL	-3	1/8"	1.91
481602	N/A	-4	1/16"	1.93
481604	481604-BL	-4	1/8"	1.91
481605	481605-BL	-4	1/4"	2.47
481644	481644-BL	-4	3/8"	2.45
481662	481662-BL	-6	1/8"	2.76
481606	481606-BL	-6	1/4"	2.47
481666	481666-BL	-6	3/8"	2.76
481668	481668-BL	-6	1/2"	4.75
481607	481607-BL	-8	1/4"	3.22
481608	481608-BL	-8	3/8"	3.22
481688	481688-BL	-8	1/2"	4.75
481609	481609-BL	-10	3/4"	8.78
481610	481610-BL	-10	1/2"	4.80
481611	481611-BL	-10	3/8"	4.80
481612	481612-BL	-12	3/4"	8.78
481613	481613-BL	-12	1/2"	8.78
481615	N/A	-16	3/4"	17.24

45°



BLUE PART #	BLACK PART #	AN SIZE	NPT SIZE	PRICE
482304	482304-BL	-4	1/8"	6.11
482306	482306-BL	-6	1/4"	6.11
482307	482307-BL	-8	1/4"	7.44
482308	482308-BL	-8	3/8"	7.44
482310	482310-BL	-10	1/2"	12.17
482311	482311-BL	-10	3/8"	12.17
482312	482312-BL	-12	3/4"	17.00
482313	482313-BL	-12	1/2"	17.00
482344	482344-BL	-4	1/4"	6.11
482362	482362-BL	-6	1/8"	6.11
482366	482366-BL	-6	3/8"	8.43
482368	482368-BL	-6	1/2"	8.43
482388	482388-BL	-8	1/2"	8.43

90°



BLUE PART #	BLACK PART #	AN SIZE	NPT SIZE	PRICE
482203	482203-BL	-3	1/8"	6.11
482204	482204-BL	-4	1/8"	6.11
482244	482244-BL	-4	1/4"	6.11
482262	482262-BL	-6	1/8"	6.11
482206	482206-BL	-6	1/4"	6.11
482266	482266-BL	-6	3/8"	10.11
482268	482268-BL	-6	1/2"	12.17
482207	482207-BL	-8	1/4"	10.11
482208	482208-BL	-8	3/8"	8.63
482288	482288-BL	-8	1/2"	12.17
482209	482209-BL	-10	3/4"	16.86
482210	482210-BL	-10	1/2"	12.17
482211	482211-BL	-10	3/8"	12.17

STRAIGHT BULKHEAD

PART #	AN SIZE	PRICE
483203	-3	3.89
483204	-4	3.45
483206	-6	3.89
483208	-8	6.37
483210	-10	9.91
483212	-12	11.90
483216	-16	24.15



UNION



BLUE PART #	BLACK PART #	AN SIZE	NPT SIZE	PRICE
481503	481503-BL	-3	-3	2.43
481504	481504-BL	-4	-4	2.43
481506	481506-BL	-6	-6	2.43
481508	481508-BL	-8	-8	4.92
481510	481510-BL	-10	-10	5.17
481512	481512-BL	-12	-12	10.38
481516	481516-BL	-16	-16	17.89

TEE

BLUE PART #	BLACK PART #	AN SIZE	PRICE
482403	N/A	-3	6.63
482404	N/A	-4	6.63
482406	482406-BL	-6	6.63
482408	482408-BL	-8	11.23
482410	482410-BL	-10	12.92
482412	482412-BL	-12	21.55
482416	482416-BL	-16	34.09



BULKHEAD TEE ON-THE-RUN

PART #	AN SIZE	PRICE
480403	-3	12.13
480404	-4	12.13
480406	-6	12.13



BULKHEAD TEE ON-THE-SIDE

PART #	AN SIZE	PRICE
483403	-3	10.46
483404	-4	10.69
483406	-6	12.36
483408	-8	15.64
483410	-10	15.64
483412	-12	31.34
483416	-16	37.10



BULKHEAD NUT

PART #	THREAD SIZE	AN SIZE	PRICE
492403	3/8-24	-3	.82
492404	7/16-20	-4	.82
492406	9/16-18	-6	.82
492408	3/4-16	-8	2.10
492410	7/8-14	-10	2.10



90° BULKHEAD

PART #	AN SIZE	PRICE
483303	-3	5.58
483304	-4	5.78
483306	-6	7.62
483308	-8	11.91
483310	-10	15.60
483312	-12	22.26
483316	-16	43.94



ALUMINUM FITTINGS AND ADAPTERS



TEE PIPE ON-THE-SIDE

PART #	AN SIZE	NPT SIZE	PRICE
FRA 482503	-3	1/8	6.63
FRA 482504	-4	1/8	6.63
FRA 482506	-6	1/4	7.36
FRA 482508	-8	3/8	8.16
FRA 482510	-10	1/2	10.20



TEE PIPE ON-THE-RUN

PART #	AN SIZE	NPT SIZE	PRICE
FRA 482603	-3	1/8	6.63
FRA 482604	-4	1/8	6.63
FRA 482606	-6	1/4	7.36
FRA 482608	-8	3/8	8.16
FRA 482610	-10	1/2	10.20



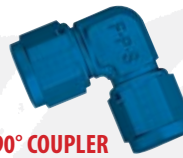
TEE SWIVEL ON SIDE

BLUE PART #	BLACK PART #	AN SIZE	PRICE
FRA 498201	N/A	-3	14.33
FRA 498202	N/A	-4	14.33
FRA 498203	498203-BL	-6	15.78
FRA 498204	498204-BL	-8	24.22
FRA 498205	498205-BL	-10	30.39
FRA 498206	498206-BL	-12	31.74
FRA 498208	498208-BL	-16	85.06



FEMALE SWIVELS

PART #	AN SIZE	PRICE
FRA 496103	-3	6.02
FRA 496104	-4	6.02
FRA 496106	-6	6.02
FRA 496107	-6X-8	7.30
FRA 496108	-8	7.30
FRA 496109	-8X-10	8.49
FRA 496110	-10	8.49
FRA 496112	-12	13.84
FRA 496116	-16	17.03



FEMALE - MALE 90° COUPLER

PART #	AN SIZE	PRICE
FRA 496306	-6	10.31
FRA 496308	-8	14.45
FRA 496310	-10	18.12



FEMALE - MALE 45° SWIVELS

PART #	AN SIZE	PRICE
FRA 498001	-3	12.12
FRA 498002	-4	12.12
FRA 498003	-6	14.53
FRA 498004	-8	20.51



FEMALE - MALE 90° SWIVELS

PART #	AN SIZE	PRICE
FRA 498101	-3	12.12
FRA 498102	-4	12.12
FRA 498103	-6	14.53
FRA 498104	-8	20.51
FRA 498105	-10	26.43



FLARE PLUG

PART #	AN SIZE	PRICE
FRA 480603	-3	1.25
FRA 480604	-4	1.25
FRA 480606	-6	1.25
FRA 480608	-8	2.43
FRA 480610	-10	3.27
FRA 480612	-12	4.70
FRA 480616	-16	6.57



MALE REDUCERS

PART #	AN SIZE	AN SIZE	PRICE
FRA 491902	-3	-4	3.76
FRA 491906	-4	-6	3.96
FRA 491908	-4	-8	5.66
FRA 491912	-6	-8	5.64
FRA 491913	-4	-10	8.25
FRA 491914	-6	-10	8.25
FRA 491915	-8	-10	8.25
FRA 491916	-4	-12	12.15
FRA 491918	-12	-6	12.13
FRA 491919	-12	-8	12.13
FRA 491920	-10	-12	12.25
FRA 491922	-10	-16	17.00
FRA 491923	-12	-16	17.87



PORT PLUG

PART #	AN SIZE	THREAD SIZE	PRICE
FRA 481403	-3	3/8-24	1.70
FRA 481404	-4	7/16-20	1.83
FRA 481406	-6	9/16-18	2.05
FRA 481408	-8	3/4-16	3.39
FRA 481410	-10	7/8-14	4.83
FRA 481412	-12	1 1/16-12	7.24
FRA 481416	-16	1 5/16-12	9.85



FLARE CAP

PART #	AN SIZE	PRICE
FRA 492903	-3	1.53
FRA 492904	-4	1.53
FRA 492906	-6	1.82
FRA 492908	-8	3.53
FRA 492910	-10	4.73
FRA 492912	-12	6.48
FRA 492916	-16	8.02

Or Call us at: 515-733-2890





ALUMINUM FITTINGS, TUBING, AND ADAPTERS



PIPE REDUCER



PART #	NPTM SIZE	PRICE
FRA 491201	1/8X1/4	3.61
FRA 491202	1/4X3/8	3.61
FRA 491203	1/8X3/8	3.61
FRA 491204	3/8X1/2	4.11
FRA 491205	1/4X1/2	4.72
FRA 491206	1/8X1/2	4.72
FRA 491207	1/2X3/4	7.88
FRA 491208	3/8X3/4	7.88

FEMALE TO MALE 90° ELBOW



PART #	NPT SIZE	PRICE
FRA 491401	1/8	11.81
FRA 491402	1/4	15.29
FRA 491403	3/8	13.75
FRA 491404	1/2	19.48

FEMALE PIPE TEE



PART #	NPT SIZE	PRICE
FRA 491701	1/8	11.81
FRA 491702	1/4	11.83
FRA 491703	3/8	13.75
FRA 491704	1/2	19.48



MALE PIPE NIPPLE

PART #	NPTM SIZE	PRICE
FRA 491101	1/8	1.94
FRA 491102	1/4	3.21
FRA 491103	3/8	5.47
FRA 491104	1/2	7.30
FRA 491106	3/4	10.45

INT. PIPE PLUG



PART #	NPT SIZE	PRICE
FRA 493201	1/16	1.86
FRA 493202	1/8	1.15
FRA 493203	1/4	1.15
FRA 493204	3/8	1.53
FRA 493205	1/2	3.30
FRA 493206	3/4	4.11
FRA 493207	1	5.12

MALE HEX PIPE PLUG



PART #	AN SIZE	PRICE
FRA 493301	1/8	2.42
FRA 493302	1/4	3.44
FRA 493303	3/8	3.44
FRA 493304	1/2	4.86
FRA 493306	3/4	7.24

Aluminum Tubing and Fittings

Lightweight aluminum tubing for nitrous lines, fuel lines and water lines. Simply flare with our 37° flaring tool and install an AN 818 nut with A-N 819. All tubing is easy to work 3003 aluminum with a .035" wall. Use with the Fragola Tube Sleeves and Tube Nuts to create custom AN Aluminum Lines.



FRA 890003 , 3/16" (-3) 25FT ROLL ALUMINUM TUBING.....	\$26.82
FRA 890004 , 1/4" (-4) 25FT ROLL ALUMINUM TUBING.....	\$26.96
FRA 890006 , 3/8" (-6) 25FT ROLL ALUMINUM TUBING.....	\$25.38
FRA 890008 , 1/2" (-8) 25FT ROLL ALUMINUM TUBING.....	\$27.41
FRA 890010 , 5/8" (-10) 25FT ROLL ALUMINUM TUBING.....	\$27.81

TUBE SLEEVE



PART #	AN SIZE	PRICE
FRA 481903	-3	.75
FRA 481904	-4	.75
FRA 481906	-6	.75
FRA 481908	-8	1.20

TUBE NUT



PART #	AN SIZE	PRICE
FRA 481803	-3	.82
FRA 481804	-4	.82
FRA 481806	-6	1.04
FRA 481808	-8	1.59
FRA 481810	-10	2.46

STEEL FITTINGS AND ADAPTERS



UNION

PART #	AN SIZE	PRICE
FRA 581503	-3	3.15
FRA 581504	-4	2.73
FRA 581506	-6	2.73
FRA 581508	-8	3.45



45°



PART #	AN SIZE	NPT SIZE	PRICE
FRA 582303	-3	1/8	2.99
FRA 582304	-4	1/8	3.51
FRA 582306	-6	1/4	3.66
FRA 582308	-8	3/8	4.70



STRAIGHT ADAPTERS

PART #	AN SIZE	NPT SIZE	PRICE
FRA 581603	-3	1/8	1.25
FRA 581604	-4	1/8	1.25
FRA 581606	-6	1/4	1.25
FRA 581607	-8	1/4	1.73
FRA 581608	-10	3/8	1.73



TEE PIPE-ON-THE-SIDE

PART #	AN SIZE	NPT SIZE	PRICE
FRA 582503	-3	1/8	4.37
FRA 582504	-4	1/8	4.43
FRA 582506	-6	1/8	4.57



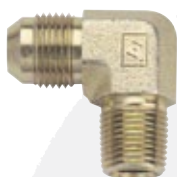
TEE PIPE-ON-THE-RUN

PART #	AN SIZE	NPT SIZE	PRICE
FRA 582603	-3	1/8	4.70
FRA 582604	-4	1/8	4.14
FRA 582606	-6	1/8	4.64



AN TEE

PART #	AN SIZE	PRICE
FRA 582403	-3	3.99
FRA 582404	-4	4.14
FRA 582406	-6	2.11



90°

PART #	AN SIZE	NPT SIZE	PRICE
FRA 582203	-3	1/8	3.12
FRA 582204	-4	1/8	2.44
FRA 82206	-6	1/4	3.07
FRA 582208	-8	3/8	4.34



BULKHEAD TEE ON-THE-RUN

PART #	AN SIZE	PRICE
FRA 580403	-3	8.48
FRA 580404	-4	8.48
FRA 580406	-6	8.48



BULKHEAD TEE ON-THE-SIDE

PART #	AN SIZE	PRICE
FRA 583403	-3	5.47
FRA 583404	-4	8.35
FRA 583406	-6	8.70



STRAIGHT BULKHEAD

PART #	AN SIZE	PRICE
FRA 583203	-3	3.24
FRA 583204	-4	3.24
FRA 583206	-6	3.24



90° BULKHEAD

PART #	AN SIZE	PRICE
FRA 583703	-3	5.86
FRA 583704	-4	7.06
FRA 583706	-6	7.19



90° BULKHEAD

PART #	AN SIZE	PRICE
FRA 583303	-3	3.51
FRA 583304	-4	4.46
FRA 583306	-6	5.14



BULKHEAD NUT

PART #	AN SIZE	NPT SIZE	PRICE
FRA 592403	-3	3/8-24	0.74
FRA 592404	-4	7/16-20	0.78
FRA 592406	-6	9/16-18	0.89

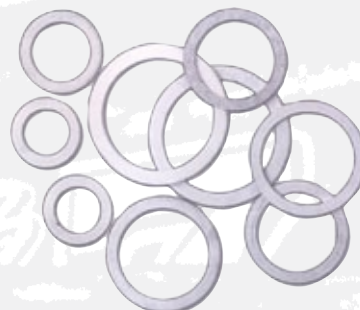
Or Call us at: 515-733-2890





CARBURETOR, POWER STEERING, FUEL INJECTION FITTINGS

RED/BLUE PART#	BLACK PART#	DESCRIPTION	PRICE
FRA 491950	FRA 491950-BL	-6 X 5/8-20MALE CARTER	5.53
FRA 491951	FRA 491951-BL	-6 X 9/16-24 MALE HOLLEY & DEMON	5.53
FRA 491952	FRA 491952-BL	-6 X 7/8-20 MALE HOLLEY -4150	7.08
FRA 491957	FRA 491957-BL	-8 X 7/8-20 MALE HOLLEY	7.08
FRA 491958	FRA 491958-BL	-10 X 7/8-20 MALE HOLLEY	7.58
FRA 491975	FRA 491975-BL	-6 X 7/8 20 MALE, 3" LONG	12.20
FRA 491976	FRA 491976-BL	-8 X 7/8 20 MALE, 3" LONG	12.34
FRA 491980	N/A	7/8-20 INLET PLUG, BLANK	4.93



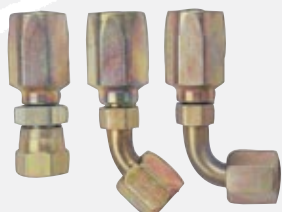
REPLACEMENT CRUSH WASHERS

PART #	DESCRIPTION	PRICE
FRA 999101	FOR 491950, 967-(5/8" I.D.)	0.38
FRA 999102	FOR 491951, 966, 977, 978-(9/16" I.D.)	0.38
FRA 999103	FOR 491952, 975, 976-(7/8" I.D.)	0.34



FRA 491950 FRA 491951 FRA 491952 FRA 491957 FRA 491975 FRA 491980

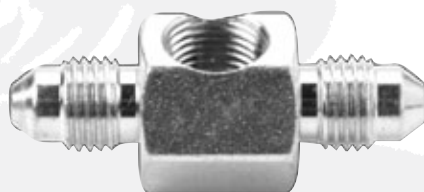
AN POWER STEERING HOSE ENDS



Power Steering systems pose their own unique set of problems, and the best way to manage the power steering system is with the FPS Power Steering Hose and fittings. The heart of this system is a specially designed three-braid hose that will withstand the pressure spikes caused by engine RPM and the resistance on the wheels. The special zinc plated steel fittings are easily assembled and reusable.

FRA 250106.....	-6 AN STRAIGHT POWER STEERING HOSE END	\$7.31
FRA 254506.....	-6 AN 45° POWER STEERING HOSE END	\$18.08
FRA 259006.....	-6 AN 90° POWER STEERING HOSE END	\$18.16

SPECIAL ADAPTERS



INLINE TEE FOR BRAKE LIGHT KIT

PART #	AN SIZE	PRICE
FRA 599903	-3 1/8 FPT ON THE SIDE	8.11



OIL TEMPERATURE ADAPTERS

PART #	NPTM SIZE	PRICE
FRA 493024	1/2	10.59
FRA 493025	3/4	10.59

GM TORQUE CONVERTERS



BOSS HOG CONVERTER APPLICATION CHART	"NIGHTSTALKER"				"STREET BANDIT"				"OUT LAW"			
	BOSS HOG Stock Converter	BOSS HOG Ultra Tow	BOSS HOG 16-2200 level 1	BOSS HOG 22-2800 level 2	BOSS HOG 28-3200 level 1	BOSS HOG 32-3600 level 2	BOSS HOG 36-4200 level 3	BOSS HOG 42-5000 level 4	WILD BOAR 24-2800 level 1	WILD BOAR 28-3200 level 2	WILD BOAR 35-4200 level 3	WILD BOAR 42-5000 level 4
GENERAL MOTORS CONVERTERS												
GM 1968-81 TH350 10 1/2 BC, 12" Converter	47000 \$102.47	4701HD \$170.71	47011 \$118.76	47012 \$211.80								
GM 1968-81 TH350 10 1/2 BC, 9.75" Converter				47022 \$238.03	47013 \$287.74	47033 \$309.09	47014 \$379.06	47015 \$470.12	47732 \$407.16	47713 \$522.65	47714 \$584.42	47715 \$652.51
GM 1965-91 TH400 11 1/2 BC, 12" Converter	46000 \$113.85	4601HD \$170.71	46011 \$150.05	46012 \$211.80								
GM 1965-91 TH400 11 1/2 BC, 9.75" Converter				46022 \$238.03	46013 \$287.74	46033 \$306.09	46014 \$379.06	46015 \$470.12	46732 \$407.16	46713 \$522.65	46714 \$584.42	46715 \$652.51
GM 1962-73, POWERGLIDE 12" Converter	34000 \$102.47	3404HD \$170.71	34041 \$118.76	34042 \$211.80								
GM 1962-73, POWERGLIDE 9.75" Converter				34032 \$238.03	34043 \$287.74	34053 \$306.09	34044 \$379.06	34045 \$470.12	34752 \$407.16	34743 \$522.65	34744 \$584.42	34745 \$652.51
GM 1982-UP 4L60E, Lock Up, 27 Spline	49400 \$191.26	4940HD \$277.78	49401 \$273.23	49402 \$374.44	49403 \$427.99	49404 \$484.92						
GM 1984-UP 4L60E, Lock Up 30 Spline, 12" Converter	49440 \$191.26	4944HD \$277.78	49441 \$273.23	49442 \$374.49	49443 \$427.99							
GM 1984-UP 4L60E, Lock Up 30 Spline, 9.75" Converter				49432 \$437.02	49433 \$450.53	49444 \$484.92	49445 \$522.65		49742 \$546.28	49744 \$563.17	49745 \$625.74	
GM 1984-UP 4L60E, Non-Lock Up, 30 Spline 9.75" Converter				49022 \$437.02	49023 \$450.53	49024 \$484.92	49025 \$522.65		49722 \$546.28	49724 \$563.17	49725 \$625.74	
GM 1992-UP 4L60E with LS1, Lock Up 30 Spline, 12" Converter	49450 \$246.18	4945HD \$277.78	49451 \$281.68	49452 \$386.02	49453 \$441.24							
GM 1992-UP 4L60E with LS1, Lock Up 30 Spline, 9.75" Converter				49462 \$437.02	49463 \$450.53	49454 \$484.92	49455 \$522.65		49752 \$546.28	49754 \$563.17	49755 \$625.74	
GM 1992-UP 4L60E with LS1, Non-Lock Up 30 Spline, 9.75" Converter				49072 \$437.02	49073 \$450.53	49074 \$484.92	49075 \$522.65		49772 \$546.28	49774 \$563.17	49775 \$625.74	
GM 1992-UP 4L80E 35 Spline	49480 \$246.18	4948HD \$277.78	49481 \$281.68	49482 \$374.44								
GM 1982-84 700R4 / 200R4 / 200C 27 Spline, Lock Up	48400 \$181.26	4840HD \$277.78	48401 \$245.74	48402 \$277.78	48403 \$389.06	48404 \$450.54						
GM 1984-91 700R4 / 200R4 / 200C, Lock Up 30 Spline, 12" Converter	48440 \$199.23	4844HD \$277.78	48441 \$245.74	48442 \$277.78	48443 \$373.94							
GM 1984-91 700R4 / 200R4 / 200C, Lock Up 30 Spline, 9.75" Converter				48452 \$415.15	48453 \$427.99	48444 \$450.54	48445 \$484.94		48742 \$518.94	48744 \$534.99	48745 \$594.45	
GM 1984-91 700R4 / 200R4 / 200C, Non-Lock Up 30 Spline, 9.75" Converter				48072 \$415.15	48073 \$427.99	48074 \$450.54	48075 \$484.94		48772 \$518.94	48774 \$534.99	48775 \$594.45	
GM 1980-UP TH350C Lock Up	47400 \$165.08	4740HD \$240.54	47401 \$277.78	47402 \$374.44	47403 \$427.99							
GM DIRECT DRIVE CONVERTERS						GM DIRT TRACK CONVERTERS						
Direct Drive	12" \$245.83	WEIGHT	9.75" \$253.34	WEIGHT	16-1800 stall	12" \$211.80	11" \$287.74	9.75" \$306.09	WARNING Dirt Track Racers: Some of these parts may or may not be legal at your track. This product looks stock but runs fast. Use at your own risk!!!			
TH350	47001	18 lbs	47002	12 lbs	TH350	47112	47101	47111				
TH400	46001	18 lbs	46002	12 lbs	TH400	46112	46101	46111				
POWERGLIDE	34001	18 lbs	34002	12 lbs	POWERGLIDE	34140	34101	34141				

Or Call us at: 515-733-2890





FORD TORQUE CONVERTERS

BOSS HOG CONVERTERS APPLICATION CHART	"NIGHT STALKER"				"STREET BANDIT"				"OUTLAW"			
	BOSS HOG Stock Converter	BOSS HOG Ultra Tow	BOSS HOG 16-2200 level 1	BOSS HOG 22-2800 level 2	BOSS HOG 28-3200 level 1	BOSS HOG 32-3600 level 2	BOSS HOG 36-4200 level 3	BOSS HOG 42-5000 level 4	WILD BOAR 24-2800 level 1	WILD BOAR 28-3200 level 2	WILD BOAR 35-4200 level 3	WILD BOAR 42-5000 level 4
FORD CONVERTERS												
FORD C-4 Case Filled 10 1/2" BC, 24 Spline 1.375 CP, 12" Converter	25010 \$145.72	2501HD \$242.44	25011 \$209.76	25012 \$261.05								
FORD C-4 Case Filled 10 1/2" BC, 24 Spline 1.375 CP, 10" Converter				25052 \$294.90	25013 \$304.02	25053 \$393.85	25014 \$494.19	25015 \$581.76	25613 \$407.16	25653 \$506.37	25614 \$584.42	
FORD C-4 Pan Filled 11 7/16" BC, 24 Spline 1.375 CP, 12" Converter	25040 \$145.72	2504HD \$182.10	25041 \$209.76	25042 \$247.95								
FORD C-4 Pan Filled 11 7/16" BC, 24 Spline 1.375 CP, 10" Converter				25032 \$294.90	25043 \$304.02	25033 \$393.85	25044 \$581.76	25045 \$581.76	25632 \$407.16	25633 \$506.37	25644 \$584.42	
FORD C-4 Case Filled 10 1/2" BC, 26 Spline 1.375 CP, 12" Converter	25110 \$145.72	2511HD \$242.44	25111 \$226.38	25112 \$251.88								
FORD C-4 Case Filled 10 1/2" BC, 26 Spline 1.375 CP, 10" Converter				25132 \$294.90	25113 \$304.02	25133 \$359.46	25114 \$506.88	25115 \$596.33	25732 \$407.16	25733 \$522.65	25714 \$584.42	
FORD C-4 Pan Filled 11 7/16" BC, 26 Spline 1.375 CP, 12" Converter	25140 \$145.72	2514HD \$182.10	25141 \$203.22	25142 \$238.78								
FORD C-4 Pan Filled 11 7/16" BC, 26 Spline 1.375 CP, 10" Converter				25152 \$294.90	25143 \$304.02	25153 \$393.85	25144 \$506.88	25145 \$596.33	25742 \$407.16	25753 \$522.65	25744 \$584.42	
FORD C-6 1.848CP 11 7/16" BC 12" Converter (332, 360, 390, 406, 427, 429)	26010 \$153.58	2601HD \$182.10	26011 \$216.31	26012 \$275.22								
FORD C-6 1.848CP 11 7/16" BC 10" Converter (332, 360, 390, 406, 427, 429)				26032 \$307.60	26013 \$317.12	26033 \$405.05	26014 \$506.88	26015 \$596.33	26632 \$407.16	26633 \$522.65	26614 \$584.42	
FORD C-6 1.375 CP 11 7/16" BC 12" Converter (289, 302, 351, 400, 429, 460)	26060 \$153.58	2606HD \$162.60	26061 \$203.22	26062 \$238.78								
FORD C-6 1.375 CP 11 7/16" BC 10" Converter (289, 302, 351, 400, 429, 460)				26052 \$294.90	26063 \$304.02	26053 \$393.85	26064 \$506.88	26065 \$596.33	26662 \$407.16	26653 \$522.65	26664 \$584.42	
FORD FMX 29 Spline	21100 \$226.38		21192 \$252.68	21193 \$293.55	21194 \$389.30	21195 \$416.38						
FORD AODE 96-03 11" BC	26550 \$238.84			26512 \$318.13	26513 \$427.99	**Must specify bolt circle size						
FORD AODE 94-95 12" BC	26555 \$191.26	2650HD \$238.45	26500 \$276.58	26501 \$374.49	26502 \$427.99	**Must specify bolt circle size						
FORD AOD 80-Up, 11 1/2" BC 1.375 CP, 12" Converter	26400 \$179.88			26401 \$278.92	26402 \$426.03				26732 \$407.16	26733 \$522.65		
FORD AOD 80-Up, 11 1/2" BC 1.375 CP, 10" Converter					26403 \$436.59	26404 \$484.92				26743 \$544.64	26744 \$574.92	
FORD 5R55 05-Up Mustang GT 8 Pad	27400 \$299.71			27402 \$412.65	27403 \$452.08							
FORD 4R100/ E40D 12 7/8 BC 1.375 CP	24401 \$359.46	2440HD \$359.51		24402 \$418.83	24403 \$461.95							

MOPAR TORQUE CONVERTERS



BOSS HOG	"NIGHTSTALKER"				"STREET BANDIT"				"OUT LAW"			
CONVERTERS APPLICATION CHART	BOSS HOG Stock Converter	BOSS HOG Ultra Tow	BOSS HOG 16-2200 level 1	BOSS HOG 22-2800 level 2	BOSS HOG 28-3200 level 1	BOSS HOG 32-3600 level 2	BOSS HOG 36-4200 level 3	BOSS HOG 42-5000 level 4	WILD BOAR level 1	WILD BOAR level 2	WILD BOAR level 3	WILD BOAR level 4
MOPAR CONVERTERS												
CHRYSLER 67-Up TF-727 24 Spline Non Lock Up	54090 \$205.78	5401HD \$219.78		*Hemi needs 54093 \$325.19 54092 \$234.63	54093 \$325.19	54053 \$407.27	54094 \$491.63	54095 \$533.13	54793 \$500.42	54753 \$528.71	54794 \$584.42	54795 \$652.51
CHRYSLER 67-Up TF-727 24 Spline With Weights, Non Lock-Up	54080 \$205.78	5408HD \$219.78		*Hemi needs 54073 \$407.27 54082 \$234.63	54083 \$325.19	54073 \$407.27	54084 \$491.63	54085 \$533.13	54783 \$500.42	54773 \$528.71	54784 \$584.42	54785 \$652.51
CHRYSLER 67-Up TF-904 Non Lock Up	53020 \$205.78			53022 \$234.63	53023 \$325.19	53053 \$407.27	53024 \$491.63	53025 \$533.13	53723 \$500.42	53753 \$528.71	53724 \$584.42	53725 \$652.51
CHRYSLER 67-Up TF-904 Non Lock Up With Weights	53080 \$205.78			53082 \$234.63	53083 \$325.19	53073 \$407.27	53084 \$491.63	53085 \$533.13	53783 \$500.42	53773 \$528.71	53784 \$584.42	53785 \$652.51
DODGE CHARGER 07-UP 48RE , Lock Up	66400 \$375.61			66402 \$429.88	66403 \$451.66							
CHRYSLER 670A 22-24 Spline	55400 \$313.75			55402 \$359.58	55403 \$438.80							
CUMMINS		5844HD \$1022.31	58442 \$893.67						*All Mopar - Must know if internally balanced or not and 3/8 or 7/16 converter bolts			



ACC Performance BOSS HOG Torque Converters are the new torque converter leader. Welded, not furnace brazed, housings. Brazing will erode, but welding does not. Industrial Bearings, no light duty needle bearings. Needle bearings are good, but not great. Only industrial bearings can withstand thousands of pounds of torque. Aluminum Washers, No fiber. ACC Converters utilize an aircraft quality aluminum washer instead of those old fiber washers that other companies use. No automation - All Hand Built! When building a quality converter, you can't leave it up to a machine, you have to build them by hand. All ACC Performance Boss Hog Converters carry a 2 year warranty.



With this information, it's easy to see why ACC Performance Boss Hog Torque Converters has emerged as the out-right leader in the industry.

Or Call us at: 515-733-2890





WHEELS AND SUSPENSION



EIBACH PERFORMANCE SPRINGS

Eibach produces the finest racecar springs in the world. Period. When other springs sag, or need frequent replacement, top race teams from F1 to WRC to Le Mans to NASCAR, inevitably turn to Eibach, and, also inevitably, wonder why they didn't choose Eibach in the first place.

To produce springs with unparalleled precision and repeatability, Eibach uses the world's finest Hi-Ten spring steel, produced to exceedingly precise tolerances according to Eibach specs. They use world-renowned German CNC coilers, as well as many machines engineered and built specifically by Eibach. In short, they use state-of-the-art technology, in every step of the manufacturing process.

But it's not just about machines and technology, it's about people. Most notably, the Eibach Springmeisters, working at production plants in Germany and the USA: Talented, expert craftsmen, each committed to creating the finest race springs in the world.

5 X 9 1/2 FRONT SPRINGS.....\$54.99

PART NUMBER.....	RATE
EIB 0950.500.0550.....	550
EIB 0950.500.0600.....	600
EIB 0950.500.0650.....	650
EIB 0950.500.0700.....	700
EIB 0950.500.0750.....	750

5 1/2 X 9 1/2 FRONT SPRINGS\$54.99

PART NUMBER.....	RATE
EIB 0950.550.0700.....	700
EIB 0950.550.0750.....	750
EIB 0950.550.0800.....	800
EIB 0950.550.0850.....	850
EIB 0950.550.0900.....	900
EIB 0950.550.0950.....	950
EIB 0950.550.1000.....	1000
EIB 0950.550.1025.....	1025
EIB 0950.550.1050.....	1050
EIB 0950.550.1100.....	1100
EIB 0950.550.1150.....	1150
EIB 0950.550.1200.....	1200

5 X 11 REAR SPRINGS\$54.99

PART NUMBER.....	RATE
EIB 1100.500.0150.....	150
EIB 1100.500.0175.....	175
EIB 1100.500.0200.....	200
EIB 1100.500.0225.....	225
EIB 1100.500.0250.....	250
EIB 1100.500.0275.....	275
EIB 1100.500.0300.....	300
EIB 1100.500.0325.....	325
EIB 1100.500.0350.....	350

5 X 15 REAR SPRINGS\$54.99

PART NUMBER.....	RATE
EIB 1500.500.0150.....	150
EIB 1500.500.0175.....	175
EIB 1500.500.0200.....	200
EIB 1500.500.0225.....	225
EIB 1500.500.0250.....	250



5 X 13 REAR SPRINGS\$54.99

PART NUMBER.....	RATE
EIB 1300.500.0125.....	125
EIB 1300.500.0150.....	150
EIB 1300.500.0175.....	175
EIB 1300.500.0200.....	200
EIB 1300.500.0225.....	225
EIB 1300.500.0250.....	250
EIB 1300.500.0275.....	275
EIB 1300.500.0300.....	300
EIB 1300.500.0325.....	325
EIB 1300.500.0350.....	350



The term "inertia" refers to the tendency of an object in motion to stay in motion unless some force acts upon the object and makes it behave in a different way. The inertia of a wheel rotating on a circle track race car undergoes four acts of force each lap. Using a proprietary, in-house testing apparatus, Bassett discovered that a wheel designed with more of its weight in the center required less force to rotate. But it wasn't as easy as simply making the center material thicker. That would raise the overall wheel weight, which was unacceptable. So Bassett's engineers conceived the unique five and six-spoke center designs, which place more weight in the center without raising weight or affecting strength. Many racing products claim to be "bolt-on" horsepower, but Bassett Racing Wheel's Inertia Advantage center designs are proven to be faster. You can see the difference yourself by using a chassis dyno to measure rear wheel horsepower.

BASSETT INERTIA 5 ON 5" 15X8

BAS 58A52I, BLACK 2" BKSPACING 19#.....	\$69.95
BAS 58A53I, BLACK 3" BKSPACING 19#.....	\$69.95
BAS 58A54I, BLACK 4" BKSPACING 19#.....	\$69.95
BAS 58A52IL, BLACK 2BKSPCNG BEADLOCK 22#.....	\$128.35
BAS 58A53IL, BLACK 3" BKSPCNG BEADLOCK 22#.....	\$128.35
BAS 58A54IL, BLACK 4" BKSPCNG BEADLOCK 22#.....	\$128.35
BAS 58A52IS, SILVER 2" BKSPCNG 19#.....	\$69.95
BAS 58A53IS, SILVER 3" BKSPCNG 19#.....	\$69.95
BAS 58A52ISL, SILVER 2" BKSPCNG BEADLOCK 22#.....	\$128.35
BAS 58A53ISL, SILVER 3" BKSPCNG BEADLOCK 22#.....	\$128.35

Bassett Racing Wheels are built from the finest materials by skilled craftsmen and feature patented technology to give you a competitive advantage. Don't let another win escape you! Bolt on a set of high performance Bassett Racing Wheels and discover the difference for yourself!

BASSETT D-HOLE DOT 15X7

BAS 57R52, BLACK 5 ON 5", 2" BACKSPACING.....	\$52.35
BAS 57R53, BLACK 5 ON 5", 3" BACKSPACING.....	\$52.35
BAS 57R53625, BLACK 5 ON 5, 3.625" BACKSPACING.....	\$52.35
BAS 57R53S, SILVER 5 ON 5", 3" BACKSPACING.....	\$52.35
BAS 57R53625S, SILVER 5 ON 5, 3.625" BACKSPACING.....	\$52.35
BAS 57RC3, BLACK 5 ON 4¾, 3" BACKSPACING.....	\$52.35
BAS 57RC3625, BLACK 5 ON 4¾, 3.625 BACKSPACING.....	\$52.35
BAS 57RC3S, SILVER 5 ON 4¾, 3" BACKSPACING.....	\$52.35
BAS 57RC3625S, SILVER 5 ON 4¾, 3.625 BACKSPACING.....	\$52.35

BASSETT D-HOLE IMCA/WISSOTA 5 ON 4¾ 15X8

BAS 58DC2I, BLACK 2" BKSPCNG 19#.....	\$63.95
BAS 58DC3I, BLACK 3" BKSPCNG 19#.....	\$63.95
BAS 58DC4I, BLACK 4" BKSPCNG 19#.....	\$63.95
BAS 58DC2IL, BLACK 2" BKSPCNG BEADLOCK 22#.....	\$122.85
BAS 58DC3IS, SILVER 2" BKSPCNG 19#.....	\$63.95
BAS 58DC3IS, SILVER 3" BKSPCNG 19#.....	\$63.95
BAS 58DC4IS, SILVER 4" BKSPCNG 19#.....	\$63.95
BAS 58DC2ISL, SILVER 2" BKSPCNG BEADLOCK 22#.....	\$122.85
BAS 58DC4ISL, SILVER 4" BKSPCNG BEADLOCK 22#.....	\$122.85
BAS 58DC2IC, CHROME 2" BKSPCNG 19#.....	\$92.75
BAS 58DC3IC, CHROME 3" BKSPCNG 19#.....	\$92.75
BAS 58DC4IC, CHROME 4" BKSPCNG 19#.....	\$92.75
BAS 58DC2ICL, CHROME 2" BKSPCNG BEADLOCK 22#.....	\$152.65
BAS 58DC3ICL, CHROME 3" BKSPCNG BEADLOCK 22#.....	\$152.65
BAS 58DC4ICL, CHROME 4" BKSPCNG BEADLOCK 22#.....	\$152.65



BASSETT D-HOLE IMCA/WISSOTA 5 ON 5 15X8

BAS 58DS2I, BLACK 2" BKSPCNG 19#.....	\$63.95
BAS 58DS3I, BLACK 3" BKSPCNG 19#.....	\$63.95
BAS 58DS4I, BLACK 4" BKSPCNG 19#.....	\$63.95
BAS 58DS2IL, BLACK 2" BKSPCNG BEADLOCK 22#.....	\$122.85
BAS 58DS3IL, BLACK 3" BKSPCNG BEADLOCK 22#.....	\$122.85
BAS 58DS4IL, BLACK 4" BKSPCNG BEADLOCK 22#.....	\$122.85
BAS 58DS2IS, SILVER 2" BKSPCNG 19#.....	\$63.95
BAS 58DS3IS, SILVER 3" BKSPCNG 19#.....	\$63.95
BAS 58DS4IS, SILVER 4" BKSPCNG 19#.....	\$63.95
BAS 58DS2ISL, SILVER 2" BKSPCNG BEADLOCK 22#.....	\$122.85
BAS 58DS3ISL, SILVER 3" BKSPCNG BEADLOCK 22#.....	\$122.85
BAS 58DS4ISL, SILVER 4" BKSPCNG BEADLOCK 22#.....	\$122.85
BAS 58DS2IC, CHROME 2" BKSPCNG 19#.....	\$92.75
BAS 58DS3IC, CHROME 3" BKSPCNG 19#.....	\$92.75
BAS 58DS4IC, CHROME 4" BKSPCNG 19#.....	\$92.75
BAS 58DS2ICL, CHROME 2" BKSPCNG BEADLOCK 22#.....	\$152.65
BAS 58DS3ICL, CHROME 3" BKSPCNG BEADLOCK 22#.....	\$152.65
BAS 58DS4ICL, CHROME 4" BKSPCNG BEADLOCK 22#.....	\$152.65



ADP Rivet

accurate, Dependable, Products



6 potential cut/snag areas on exploding rivets



Smooth, Safer Backside



Pop-rivet leaves nail in hole. Hard to drill out!



No Nail in hole for easier drill-out

1/8 Ultimate Racers Rivets

ADP ABS4246URR-BK, RIVETS 250 MULTI-GRIP 1/8 SMALL HEAD BLACK	\$12.99
ADP ABS4246URR-SL, RIVETS 250 MULTI-GRIP 1/8 SMALL HEAD SILVER.....	\$12.99
ADP ABS4246URR-WH, RIVETS 250 MULTI-GRIP 1/8 SMALL HEAD WHITE.....	\$12.99

3/16 Ultimate Racers Rivets

ADP ABS6266URR-BK, RIVETS 250 MULTI-GRIP 3/16 SMALL HEAD BLACK	\$12.99
ADP ABS6266URR-CB, RIVETS 250 MULTI-GRIP 3/16 SMALL HEAD CHEVRON BLUE.....	\$12.99
ADP ABS6266URR-PB, RIVETS 250 MULTI-GRIP 3/16 SMALL HEAD PEPSI BLUE.....	\$12.99
ADP ABS6266URR-RD, RIVETS 250 MULTI-GRIP 3/16 SMALL HEAD RED.....	\$12.99
ADP ABS6266URR-SL, RIVETS 250 MULTI-GRIP 3/16 SMALL HEAD SILVER.....	\$12.99
ADP ABS6266URR-WH, RIVETS 250 MULTI-GRIP 3/16 SMALL HEAD WHITE.....	\$12.99
ADP ABS6266URR-YE, RIVETS 250 MULTI-GRIP 3/16 SMALL HEAD YELLOW.....	\$12.99
ADP ABS6266LURR-BK, RIVETS 250 MULTI-GRIP 3/16 LARGE HEAD BLACK.....	\$14.49
ADP ABS6266LURR-CB, RIVETS 250 MULTI-GRIP 3/16 LARGE HEAD CHEVRON BLUE.....	\$14.49
ADP ABS6266LURR-PB, RIVETS 250 MULTI-GRIP 3/16 LARGE HEAD PEPSI BLUE.....	\$14.49
ADP ABS6266LURR-RD, RIVETS 250 MULTI-GRIP 3/16 LARGE HEAD RED.....	\$14.49
ADP ABS6266LURR-SL, RIVETS 250 MULTI-GRIP 3/16 LARGE HEAD SILVER.....	\$14.49
ADP ABS6266LURR-WH, RIVETS 250 MULTI-GRIP 3/16 LARGE HEAD WHITE.....	\$14.49
ADP ABS6266LURR-YE, RIVETS 250 MULTI-GRIP 3/16 LARGE HEAD YELLOW.....	\$14.49

1/8 Open-End Blind Rivets

ADP ABS44-BK, RIVETS 250 POP 1/8 LARGE HEAD BLACK.....	\$12.99
ADP ABS44-RD, RIVETS 250 POP 1/8 LARGE HEAD RED.....	\$12.99
ADP ABS44-SL, RIVETS 250 POP 1/8 LARGE HEAD SILVER.....	\$12.99
ADP ABS44-WH, RIVETS 250 POP 1/8 LARGE HEAD WHITE.....	\$12.99

3/16 Open-End Blind Rivets

ADP ABS66-BK, RIVETS 250 RACERS 3/16 SMALL HEAD BLACK.....	\$9.69
ADP ABS66-CB, RIVETS 250 RACERS 3/16 SMALL HEAD CHEVRON BLUE.....	\$9.69
ADP ABS66-PB, RIVETS 250 RACERS 3/16 SMALL HEAD PEPSI BLUE.....	\$9.69
ADP ABS66-RD, RIVETS 250 RACERS 3/16 SMALL HEAD RED.....	\$9.69
ADP ABS66-SL, RIVETS 250 RACERS 3/16 SMALL HEAD SILVER.....	\$8.99
ADP ABS66-WH, RIVETS 250 RACERS 3/16 SMALL HEAD WHITE.....	\$9.69
ADP ABS66-YE, RIVETS 250 RACERS 3/16 SMALL HEAD YELLOW.....	\$9.69
ADP ABS66L-BK, RIVETS 250 RACERS 3/16 LARGE HEAD BLACK.....	\$9.69
ADP ABS66L-CB, RIVETS 250 RACERS 3/16 LARGE HEAD CHEVRON BLUE.....	\$9.69
ADP ABS66L-PB, RIVETS 250 RACERS 3/16 LARGE HEAD PEPSI BLUE.....	\$9.69
ADP ABS66L-RD, RIVETS 250 RACERS 3/16 LARGE HEAD RED.....	\$9.69
ADP ABS66L-SL, RIVETS 250 RACERS 3/16 LARGE HEAD SILVER.....	\$9.69
ADP ABS66L-WH, RIVETS 250 RACERS 3/16 LARGE HEAD WHITE.....	\$9.69
ADP ABS66L-YE, RIVETS 250 RACERS 3/16 LARGE HEAD YELLOW.....	\$9.69

Aluminum Back Up Washers

3/16 INCH
500 PACK



ALL 18202, 3/16 BACKUP WASHERS 500CT.....	\$8.99
---	--------

QUICK CHANGE LUG NUT WRENCH

- A "Must-Have" for the pits!
- Free spinning allows for quick loosening or tightening of lug nuts.
- Fits 1" lug nuts.
- Chrome plated finish with rubber handles



SMI 91082315, LUG NUT SPEED WRENCH.....	\$39.95
---	---------

QUICKCAR PREMIUM TIRE PRESSURE GAUGE

Features easy to read 2" high-quality glow in the dark gauge with shock ring and relief valve. 14" flex hose with 45° chuck with strain relief on each end.



QUI 56-022, 20PSI PREMIUM TIRE PRESSURE GAUGE.....	\$36.95
QUI 56-042, 40PSI PREMIUM TIRE PRESSURE GAUGE.....	\$36.95
QUI 56-062, 60PSI PREMIUM TIRE PRESSURE GAUGE.....	\$36.95



QUICKCAR TIRE INFLATOR WITH PRESSURE GAUGE

Features easy to read 2" gauge with shock ring. Connects to air hose and can be used to check pressure, inflate, or deflate at the press of a button. Reads up to 60 PSI.

QUI 56-065, TIRE INFLATOR WITH GAUGE.....	\$67.95
---	---------

AIR RIVET GUN



- Saves time and effort!
- Quickly and securely installs rivets.
- Works with steel and aluminum rivets.
- Operates at 60-90PSI.
- 1/4" NPT thread air hook-up.

SMI YS-011M, AIR RIVET GUN.....	\$69.99
---------------------------------	---------

TIRE GRINDING DISC



- Can be used with a grinder or polisher
- Improves the performance and longevity of your racing tire.

KMJ 910-82080, 4 INCH TIRE GRINDING DISC.....	\$36.99
KMJ 910-82085, 7 INCH TIRE GRINDING DISC.....	\$47.99

QUICKCAR ECONOMY TIRE PRESSURE GAUGE

Features easy to read 2" gauge with shock ring and relief valve. 12" flex hose with 45° swivel chuck.



QUI 56-007, 40PSI ECONOMY TIRE PRESSURE GAUGE.....	\$16.95
QUI 56-008, 60PSI ECONOMY TIRE PRESSURE GAUGE.....	\$16.95



Safe-Quip Series "110" Single Layer 1-Piece Racing Suit

Suits are made with single layer Pyrovatex construction FRC material. The FRC material retains the softness and breathability of cotton and will wick away moisture from the skin. The treatment process leaves the exterior shiny and supple. Since the Pyrovatex treatment is absorbed into the cotton fibers, with proper care the suit will retain its flame retardant properties beyond the useful life of the garment.

110 Series 1-Piece Suit	Medium \$89.95	Medium-Tall \$89.95	Large \$89.95	X-Large \$89.95	2XL \$104.95
Black w/ black stripes	110003	110004	110005	110006	110007
Red w/ black stripes	110013	110014	110015	110016	110017
Blue w/ black stripes	110023	110024	110025	110026	110027

110 Series Jacket	Medium	Medium-Tall	Large \$59.95	X-Large \$59.95	2XL \$69.95	3XL \$79.95
Black w/ black stripes	N/A	N/A	111005	111006	111007	111008
Red w/ black stripes	N/A	N/A	111015	111016	111017	111018
Blue w/ black stripes	N/A	N/A	111025	111026	111027	111028

110 Series Pants	Medium \$49.95	Medium-Tall \$49.95	Large \$49.95	X-Large \$49.95	2XL \$59.95	3XL \$69.95
Black w/ black stripes	112003	112004	112005	112006	112007	112008
Red w/ black stripes	112013	112014	112015	112016	112017	112018
Blue w/ black stripes	112023	112024	112025	112026	112027	112028

SUIT SIZING CHART

	Medium	Med-Tall	Large	X-Large	2XL	3XL
Height	5'8" - 5'10"	5'10" - 6'	5'10" - 6'	6' - 6'2"	6'2" - 6'4"	6'4"-6'6"
Weight	140 - 165	150 - 175	165 - 195	200 - 225	225 - 250	250 - 275
Waist	34 - 36"	34 - 36"	36 - 38"	40 - 42"	44 - 46"	48 - 52"
Chest	38 - 40"	38 - 40"	42 - 44"	46 - 48"	50 - 52"	54 - 56"
Inseam	29"	30"	31"	32"	33"	33"
Shoulders	18"	18"	19"	20"	21"	23"
Sleeve	33 - 34"	33 - 34"	34 - 35"	36"	37"	38"
Neck	14.5"	14.5"	15 - 16"	16"	17 - 18"	18"

Waist: at natural waist (not where your jeans ride)	Chest: circumference at widest point	Inseam: crotch seam to ankle bone	Shoulder: shirt shoulder seam to shirt shoulder seam	Sleeve: back base of neck to wrist with elbow bent
---	---	--	--	--



RACEQUIP RIDGELINE HELMETS

- Snell SA-2010 Rating
- Lightweight Prepreg Composite Shell
- Expanded Polystyrene (EPS) Liner
- Comfort Fit Blended NoMex Interior
- Multi-Port Ventilation System
- Low-Fog Airflow Design
- Fire Retardant Interior and White High Gloss White Paint
- 3mm Polycarbonate Face Shield

•Uses standard "banana-style" tear-offs (1202)
Introduced in 2007, the RidgeLine helmet has been extremely well received by racers. Features you would expect to find in a helmet costing much more.

- RAC 284112, SA 2010 WHITE RIDGELINE SMALL\$239.95
- RAC 284113, SA 2010 WHITE RIDGELINE MEDIUM.....\$239.95
- RAC 284115, SA 2010 WHITE RIDGELINE LARGE.....\$239.95
- RAC 284116, SA 2010 WHITE RIDGELINE X-LARGE.....\$239.95
- RAC 284117, SA 2010 WHITE RIDGELINE 2XL.....\$239.95



SafeQuip 351 Racing Gloves

Nomex Knit Construction. Hook & Loop Adjustable strap, SFI 3.3/1 rating. Soft, Supple, and comfortable. High Grip Grey Suede Leather Reinforced Palm.

	Medium	Large	X-Large
Black	351003	351005	351006
Red	351013	351015	351016
Blue	351023	351025	351026

Your choice \$39.99



SafeQuip Mod SFI Driving Gloves

Double layer Nomex & leather gloves built to SFI 3.5/5 specs that provide a soft and comfortable feel. Full leather palm and mitered fingers provide unmatched comfort and control.

	Medium	Large	X-Large
Black	312003	312005	312006
Red	312013	312015	312016
Blue	312023	312025	312026

Your choice \$59.99



RACEQUIP HELMET SUPPORTS

- RAC 337007, BLACK SFI 360°\$24.99
- RAC 337017, RED SFI 360°\$24.99
- RAC 337027, BLUE SFI 360°\$24.99



RaceQuip



SAFE-QUIP RIBBON WINDOW NETS

SFI 27.1 Rating. Popular 1" Polypropylene webbing. Jig-built for consistency.

RAC 725005, 18X24 Black	\$14.95
RAC 725015, 18X24 Red	\$14.95
RAC 725025, 18X24 Blue	\$14.95
RAC 725035, 18X24 Yellow	\$14.95
RAC 725045, 18X24 Orange	\$14.95
RAC 725055, 18X24 Purple	\$14.95
RAC 725065, 18X24 Silver	\$14.95
RAC 725075, 18X24 Green	\$14.95

\$59.99



RaceQuip

SAFE-QUIP 5-POINT LATCH HARNESS

Our most popular belt set. Twin individual Shoulder Belts. SFI 16.1. Pull-Down lap belt. Double Adjustable for ease of installation. Wrap-around or Bolt-in mounting. Drop-forged steel hardware. Premium 3" nylon webbing.

COLOR	PART NUMBER
BLACK	RAC 711001
RED	RAC 711011
BLUE	RAC 711021

\$169.99



SAFE-QUIP 6-POINT CAM-LOCK HARNESS

Known as "The best value in driver protection, These SFI 16.1 harnesses feature: Double Pull-Down Adjustable for ease of installation. Wrap-around or Bolt-in mounting. Drop-forged steel hardware. Premium 3" nylon webbing.

COLOR	PART NUMBER
BLACK	RAC 751001
RED	RAC 751011
BLUE	RAC 751021

RaceQuip



SAFE-QUIP MESH WINDOW NETS

Non-SFI rated. 18X24 size. Mesh provides superior visibility.

RAC 723003, BLACK 18X24	\$14.95
RAC 723013, BLUE 18X24	\$14.95
RAC 723023, RED 18X24	\$14.95

\$59.99



RaceQuip

SAFE-QUIP 303 MID-TOP RACING SHOES

Exceeds SFI 3.3/5. Suede Leather Upper. Pyrovatex Flame Retardant Liner. Classic American Styling. Molded Rubber Sole. Padded Ankle. Arch Support. Achilles Flex Opening.

SIZE	PART NUMBER
9	RAC 3030090
9.5	RAC 3030095
10	RAC 3030100
10.5	RAC 3030105
11	RAC 3030110
11.5	RAC 3030115
12	RAC 3030120
13	RAC 3030130

\$39.99



QUICKCAR 15" STEEL STEERING WHEELS

15" BLACK STEEL. DISHED STYLE. 3-BOLT MOUNTING. OUTSIDE COLOR

BLACK	PART NUMBER
BLACK	QUI 68-003
RED	QUI 68-0031
BLUE	QUI 68-0032

RaceQuip



SAFE-QUIP LATCH & LINK STYLE WINDOW NET MOUNTING KIT

RAC 700103, STD LATCH KIT	\$34.95
RAC 700104, HEAVY DUTY LATCH KIT	\$34.95

\$49.99



QUICKCAR 15" ALUMINUM STEERING WHEELS

15" ALUMINUM. DISHED STYLE. 3-BOLT MOUNTING. HALF WEIGHT OF STEEL!

OUTSIDE COLOR	PART NUMBER
BLACK	QUI 68-001
RED	QUI 68-0011
BLUE	QUI 68-0012

RaceQuip



SAFE-QUIP GM SPRING-LOADED PIN STYLE WINDOW NET MOUNTING KIT

RAC 700101, SPRING PIN KIT	\$29.95
----------------------------------	---------

\$14.95



QUICKCAR STEERING WHEEL CENTER PAD

Hook & Loop fasteners for all 3-Spoke Steering Wheels

COLOR	PART NUMBER
BLACK	QUI 58-243
RED	QUI 58-241
BLUE	QUI 58-242

RaceQuip



SAFE-QUIP GM BUCKLE STYLE WINDOW NET MOUNTING KIT

RAC 700102, BUCKLE KIT	\$29.95
------------------------------	---------



STEERING WHEEL QUICK DISCONNECT

Fits most 3-Bolt Mounting wheels.
KMJ 19234, PUSH-BUTTON QUICK DISCONNECT

